



HUGHENDEN NEWS

INCLUDING BRYANTS BOTTOM, CRYERS HILL &
HUGHENDEN VALLEY

Winter 2023

www.hughendenresidents.org

Price £2.50 – Free with Membership



Your Local Home Improvement Centre

Extending renovating or repairing your property

Can supply all the materials needed to complete your project

For the most competitive prices call, phone or email today

And speak to one of our experienced staff.

- * Decorative materials and paint mixed while you wait
- * Sawn and prepared softwood timbers
- * Bricks blocks sand and cement
- * Plywood and sheet materials
- * Paving and landscaping
- * Makita power tools
- * Insulation products
- * Plant Hire



Visit our showroom for quality bathrooms

With prices to suit all budgets.



Deliveries made by our crane offload vehicles

Valley Road, Hughenden Valley. HP14 4LG www.buildbase.co.uk

Tel: 01494 565600 Fax: 01494 565601 Email: wycombe@buildbase.co.uk

Karen and her friendly team welcome you to

The Harrow



Your local family and dog friendly pub, serving delicious food, real ales
and a great selection of wines.

Dogs, muddy boots, hikers and bikers welcome.

Food served 7 days a week.

All day Saturday from 12 till 9pm and Sunday till 6pm.

Baby changing and full disabled facilities.

Functions catered for with private hire if required.



Warrendene Road, Hughenden Valley, HP14 4LX

01494 564105

www.harrowhughenden.co.uk

Like us on Facebook/[The-Harrow-Pub](https://www.facebook.com/The-Harrow-Pub)

Find us on Instagram [@theharrowpub](https://www.instagram.com/theharrowpub)

Contents

Chairman’s Roundup	6
Treasurer’s Report	7
Hughenden Valley Community Speed Watch (CSW)	9
Drainage Improvement Group	10
Autumn Afternoon Tea	12
Editorial	14
Working in the Community Shop – A volunteer’s perspective	16
Hughenden Valley’s Rare Chalk Grassland	19
Hughenden Parish Council	22
Hughenden Street Association (HSA)	24
Your Conservation Group	25
Protect Your Festive Online Shopping from Scammers with these tips!	26
Hughenden Community Support Trust	27
A Happy 100!	27
High Wycombe and District u3a	28
Pupils’ reports on moving up	30
News from St Michael’s Church	33
Speen Helping Hospices	35
Wycombe Environment Centre Meeting	36
Medlar Jelly	38
Your Village Store and Coffee Shop	40
Hughenden Allotments and Gardens Association	42
Summer fete 2024	45
Terracycle at the Harrow	46

Contents (continued)

Not So Long Ago	48
Valley Players at Hughenden Primary School	52
Valley Players	53
The “Lego” Houses	54
Hughenden Valley Football Club	57
Press releases from Buckinghamshire Council	62
North West Chilterns Community Board	62
National Trust Christmas Events	66
New Physio Business Arrives In the Valley	67
Neighbourhood Watch	69
Junior Crossword	70
Crossword Clues	71
Instructions for Authors	73
Hughenden News - Publications Dates	74
For your Diary	74
HVRA Officers and Road Reps Spring 2023	75
Useful contacts	76
HVRA Information	76
Regular Village Hall Users and Contacts	77
Index of Advertisers	78

Chairman's Roundup

Well, my wish for fine weather expressed in the Summer edition of the News fell on deaf ears. What a disappointment for all those who spent hours planning the Summer Fete. Still, a financial loss was avoided through the success of the barn dance and the raffle. Added to which the swift action taken by some of the organisers in getting refunds for monies outlaid actually resulted in a small surplus.

Plans are now being laid for next year. The bulk of planning the format is in place but volunteers are required to do some work ahead of the day and of course there will be people required to deliver the fete on the day. Keep your eyes open for the call, remember, it won't happen unless folks step forward and volunteer now.

I can report that the funding for the replacement roadside planters is now secured from the parish council. We are just refining the details now.

The Senior Citizens Autumn Tea was a great success. A fuller report appears elsewhere in the News but I do want to echo the thanks paid to all the HVRA volunteers, ably led by Elaine Merrilees. Nearly 20 volunteers came together to deliver the event, without them nothing would have happened. So well done all.

The 'Planning for the Future' sub group has met twice and will be putting its first recommendations to the Executive Committee shortly. These are around alterations to the membership offer, a different approach to Hughenden News and how we might work with the Village Hall to expand the events provided for the village.

Hughenden Parish Council has initiated a piece of work to look at how Village Halls and Residents Associations operate across the wards in the parish and to examine if there is benefit in developing a more cohesive approach. HVRA is taking the lead in drawing together the Residents Associations responses.

Another Parish Council initiative is the production of Parish Heritage and Nature Walks and Maps. If this is your thing and you would like to be involved in the planning and production stages please let me know and I'll put you in the picture.

On a similar note, I was at Little Burnham Meadow and Spinney recently along with the Conservation Group and the Parish Council. This is a parcel of land tucked away behind the allotments and the playing fields. The plan for this area is to maintain the wildlife diversity in good condition and engage with us all to

create an enjoyable, educational and safe place to enjoy. Engaging with us means our active involvement with the upkeep of the meadow. The Conservation Group is stretched at the moment and needs more volunteers; more information about this is elsewhere in the magazine.

Talking of volunteers, this can be great fun, meet new people, mix with those of similar interest or discover a new one. If your particular interest is

not covered let HVRA know, we'll help you to create a new group.

Finally, a thank you to all those volunteers who give up their time so willingly to make this village a better place to live.

Peter Spence
Chair
Hughenden Valley Residents
Association

Treasurer's Report

I just wanted to issue a reminder that Annual Subs for 2023-4 are now due if you haven't paid and that membership remains at £5.

If you are paying online, please pay into our Lloyds account and not the old HSBC bank account. Account details for subscription payments is as follows:

Account Name: Hughenden Valley
Residents Association or HVRA
Sort Code: 30-99-55
Acct No: 25967260

Please identify your house no/name and road in the 18 character reference section when paying online. If this is missing we cannot accurately update our records and your road rep may come around chasing for your contribution - to mutual embarrassment..

Thanks
Paul Woodford
Treasurer HVRA

BETSY WILLIAMS

SOLICITOR



INSTRUCTION TAKEN IN YOUR OWN HOME



Betsy is a qualified Solicitor who comes to you to help with:

- **Wills • Probate • Inheritance Tax planning**
- **Lasting Powers of Attorney • Trusts**
- **General elderly client work**

Betsy, you were a real star and made what, for me, would have been a difficult task a really pleasant one due to your kind understanding and patience and of course, your lovely sense of humour! Thanks again Betsy."

Mrs T

"May I say what a pleasure it was working with you. You are a considerate professional, not to mention a lot of fun! Thank you for your unending patience."

Mrs K

Call 01844 342083

**for a free no obligation chat
or email betsy@betsywilliams.co.uk**

For more information and referrals - www.betsywilliams.co.uk

Hughenden Valley Community Speed Watch (CSW)

You are, no doubt, aware that CSW sessions are carried out each week at various locations in the Parish of Greater Hughenden. I, along with 3 other Ward Coordinators, input the data from the Sentinel Video camera arising from each speeding vehicle on

to the Police's CSW website, and you may be interested to see the cumulative effect that this has. Below are the results that Thames Valley Police have passed to me of speeding vehicles for the week commencing 2nd October:-

Some results from Greater Hughenden CSW Group

During the last week 92 vehicle(s) were input
During the last month 341 vehicle(s) were input
During the last year 2,517 vehicle(s) were input

Secondly some results from Thames Valley

During the last week 826 vehicle(s) were input
During the last month 4,925 vehicle(s) were input
During the last year 49,088 vehicle(s) were input

Thirdly some results from ALL groups on CSW online

During the last week 3,158 vehicle(s) were input
During the last month 14,505 vehicle(s) were input
During the last year 160,379 vehicle(s) were input

160,379 – that's an enormous number, but it's easy to avoid getting caught on camera – just drive within the local speed limits. This will ensure a safer environment for other road users and those on foot making their way to local schools and other village amenities.

If you would like to join the CSW team for an hour or so, please get in touch with me; I would love to hear from you.

Rosemary Hewitt
CSW Co-ordinator for HV
01494 562752

Drainage Improvement Group



Some years ago

Harrow Flooded Again

Amidst the unseasonably hot and largely dry weather we experienced in September and October, the Valley had just one or two downpours. It was one of those that resulted in the Harrow pub being flooded yet again.

The pub faces the double whammy of being close to the road and at the point where the winterbourne stream crosses the road. The stream is culverted from the ditch on the field side and continues in a pipe underground along Valley Road until it reemerges beyond Deeters into the

Hopkins field. When the pub was built in the late Ages, I expect scant regard was given to the proximity of the stream and most certainly the pub was at the same level as the cart track outside. The pub now sits some way below the road and the stream in flood will spill over the ditch.

This is the second time that Karen has experienced flooding in her five years as landlady at the Harrow. She is very aware of its history, the photos on the wall of the pub provide the evidence.



In recent years, some work has been done to try and prevent water getting into the pub, but it can still penetrate via the entrances and airbricks. Sandbags sit at the entrance to the public bar on a permanent basis.

Karen's team work hard at keeping nearby drains clear, but their experience suggests that the problem

lies mainly with the road – insufficient drainage, road camber and the resultant wash from passing cars.

The DIG have offered to look into this with Buckinghamshire Council.

Paul Woodford
HVRA DIG

Autumn Afternoon Tea

The Hughenden Valley Village Hall was the venue for the Autumn Afternoon Tea on Saturday 30th September. The Residents Association invited the senior residents of Hughenden Valley, Cryers Hill and Bottom to come together for a traditional afternoon tea, followed by entertainment by the Hughenden Valley Shop Choir.

Volunteers came together in an amazing team effort providing transport, making yummy sandwiches, along with various delicious cakes, scones and home-

made strawberry jam, whilst serving Prosecco and an endless quantity of tea.

Participants were treated to a prize draw and grateful thanks go out to the village shop for donating a wonderful hamper as the top prize. One special resident, Marion Brand, who was celebrating her 95th birthday on the day was presented with an autumn pot of plants by Peter Spence, HVRA Chairman. She was also treated to a chorus of Happy Birthday from the choir.



The seniors event had to be put on hold during Covid but judging by the comments and messages of thanks that have been received everyone enjoyed being able to join together for this event once again.



Editorial

As usual, the school, parents, pupils and the shop arranged a Halloween Trail through the village over half-term. For those of you who could not get away to explore the trail we have scattered some selected pictures of the trail through this edition.

In the last edition we mentioned FixMyStreet which is the preferred channel for reporting road and footpath issues to Buckinghamshire Council. We can all help in keeping our hedges trimmed, see the note from the Parish Council. If you report an issue on FixMyStreet and don't get a satisfactory answer get in touch

with David Carroll, our Councillor at Buckinghamshire Council. David knows his way around the Council machine and the streets in and around Hughenden, and has years of experience. David can be reached on David.Carroll@buckinghamshire.gov.uk

Throughout this edition you will see that various groups in the valley are seeking new members. This is a way to improve our 3 villages as well as to make friends, gain new skills or dust off your current skills. Let's make the village you want to live in.

Reader survey - Do you read the whole magazine, just parts, or just flick through? Please drop a line to magazine@hughendenresidents.org, or text to 07414 788182, no names needed, just say if you have read all the mag or just parts. **Big Thanks.**

Finally, thank you to our contributors and the Editorial team.



The editorial team as the deadline nears

BEECHDEAN

Farmhouse Dairy Ice Cream



Now available from
Hughenden Village Store and Coffee Shop

140ml Beechdean Farmhouse 'Spoon in Lid' Tubs
Chocolate Truffle, Eton Mess, Luxury Vanilla, Salted Caramel, White Chocolate
Vegan Coco Caramel, Vegan Coco Vanilla

Special Offers Available in-store!

2 Litre Beechdean Farmhouse Vanilla Tubs

Hughenden Village Store and Coffee Shop
Coombe Lane, Hughenden Valley, High Wycombe HP14 4NX

 @Hughendenvillagestoreandcoffeeshop



  
@BeechdeanGroup



Opening Hours: Monday to Friday : 8am – 5:30pm, Saturday : 8am – 4:30pm, Sunday : 8:45am – 3pm

Working in the Community Shop – A volunteer’s perspective “The coffee shop was buzzing with late lunchers and early tea takers”

Have you ever thought about becoming a volunteer and helping in the shop for a few hours?

I have been volunteering off and on for the past 15 years in a variety of roles. The customers and the staff are all a good humoured bunch so it is a pleasure to work for them and with them. You will be on first name terms with many of the customers in next to no time

I am sure you are tempted to volunteer but you have some questions. Let me anticipate a few.

Firstly you would never be working alone. At quiet times there are at least two people on duty and at busy times three or four are serving. All of the team can remember their first few times and will readily help to train you as you go.

You think you couldn’t manage the till. You will be very pleasantly surprised. The till is your friend. The majority of the items sold in the store and served in the coffee shop are bar coded so the item description and price are easily scanned in and totalled up. If say a £10 note is tendered you enter that and the till



tells you what change to pay out. Nowadays over 80% of customers pay contactless, by card or phone, so you can go a whole shift without handling cash.

With customers for food and drink the till comes into its own. When the order has been placed the till produces, in addition to the full receipt, a slip of for the drinks and a slip for the kitchen. This helps divide the work between three people and keeps service brisk and in order.

Ordinarily I help open up. Whilst there is much to do, it is quiet time and a good start to my day. Yesterday

they were short handed. At very short notice I was asked to step in and help man the till from 2 to 4. It was a sunny day. The coffee shop was buzzing with late-lunchers and early tea takers. It was a four-hander. To keep up, filling and emptying the dishwasher was an almost continuous job and that is probably the case for all the busy times.

So if you are tempted to open up, or simply to wash up, give it go. You will

find it is great fun working in a team and very worthwhile.

Peter Cannon

Interested? To take it further talk to one of the supervisors Chris, Lowri, Maryte, Mia, Rosemary, and Sue or phone the manager Louise Jones on HW 568653





Business Advice | Audit | Tax | Accounts

We are one of the longest established firms of accountants in High Wycombe and the Thames Valley, and can offer a wealth of expertise. Our highly experienced team of accountants, tax and business advisers can assist you with all your accountancy needs.



Our Services

- Accountancy Services
- Audit
- Digital Solutions
- Personal & Business Taxation
- Outsourced Accounting Services
- Payroll Bureau
- Company Formations and Company Secretarial

Please get in touch...

Email: enquiries@stca.co.uk Call today on: **01494 552100**

Or visit: www.stca.co.uk

Seymour Taylor is a practising name of Seymour Taylor Limited and is registered to carry on audit work and regulated for a range of investment business activities by the Institute of Chartered Accountants in England & Wales.

THE PAULINE QUIRKE
ACADEMY OF PERFORMING ARTS

ENROLLING NOW

IN HIGH WYCOMBE

PERFORMING ARTS TUITION
FOR AGES 4-18 YEAR OLDS

PQA
THE PAULINE QUIRKE
ACADEMY OF PERFORMING ARTS

BOOK YOUR
FREE TASTER
SESSION
AT PQACADEMY.COM

Hughenden Valley's Rare Chalk Grassland

Local Wildlife Site

The Conservation Group

October 2023 report

Early October and we are (nearly) basking in sunshine – we are in the midst of a spell of good weather thanks to a high-pressure system bringing warm air from the Azores. It is warm, 20 deg +, dry and little wind. This is especially good news for the Conservation Team since we are hoping to get the grass on the banking mowed and the hay removed in the near future. We do, of course, have to take our place in the queue behind farmers and growers who need to get their crops in and their own hay/silage cut as a priority. The opportunity for our grass to be taken down at this time of year not only saves our small team a lot of back-aching labour but also maintains the banking environment's necessary low-fertility for the coming year whilst ensuring the reappearance of the full range of wildflowers next season.

Visitors will at present see that the banking is still very much in healthy growth, the grass particularly (like peoples' lawns) never seems to stop. However, it is also noticeable that whilst the larger trees are beginning to show their autumn colours and are beginning to lose foliage, many of the

smaller trees and bushes are even showing new growth; many smaller plants and flowers are still present, though later than usual. This is clearly the result of the variable spring and summer and our current warm spell. Although this will not necessarily be detrimental in the long term to the plant life, the erratic growth patterns being experienced can only be stressful to some plants. It should also be borne in mind that the strange growth cycles of plants (this year, the later flowering of all species of orchids on our banking due to the cold spring; the current late-blossoming of many wildflowers for example) has knock-on effects to insects, invertebrates and even small mammals – late autumns and late flowering plants can easily delay/disrupt/shorten the winter hibernation or torpid periods of many species. Many migratory birds suffer if their arrival in the UK fails to coincide with the appearance of their food-source, be that insects, caterpillars, seeds or nectar – it can be autumn/winter as well as spring summer.

The above situation relates, of course, to the long-term (and currently worsening) effects of climate change. Whilst we have little

or no ability to change this autumn's situation vis-à-vis last spring or the coming winter, we must make efforts, however small and however localised, to lessen the effects of climate change and ameliorate our natural environment.

On brighter notes, in August the Conservation Group leader (John Moorby, plus some of his volunteers) hosted two walk-round evenings for members of other Hughenden Valley-based groups. These necessarily small groups were attended by representatives of the Residents' Association, the Climate Group and HAGA as a way of introducing to those Groups some of what we do on the chalk bank, what we aim to do and what we have already achieved. As the walks took place in summer, we were unable to show off our much-vaunted orchids – despite their later than usual blooming they had all faded by August. However, John was fully occupied showing our complement of wildflowers, pointing out several of our rarer butterflies and other invertebrates, and explaining our group's management ethos.

Examples of what we were able to show to our visitors included:

Primroses, Birds Foot Trefoil, the large Burnet Rose (which now has

several well-established, self-seeded offspring), Common Centaury, native Honeysuckle (Woodbine), Black (and White) Bryony, Wild Carrot (many displaying a false insect in the centre of their flowerheads – to encourage the real insects to go to other, not-yet-fertilised blooms), Scabious, Knapweed, wild Marjoram, 6-spot Burnet moth, Small Blue moth.

Also on show were our laid hedge, and the fully healthy and well foliated Pollarded Oak, plus the various areas that have been cleared to provide variously shelter or sunny spots to encourage colonisation by flowers rather than invasive scrub.

Remarkable amongst our trees, we have one Elm tree which appears to have survived its initial attack by beetle-borne fungi; next to it is an even taller companion and nearby there are multiple suckers that sprout up along live root runs. Could the Conservation Banking be a lucky sanctuary for trees resistant to Dutch elm disease? We certainly hope so.

We believe that the walks were well received and were enjoyed by everyone and that the groups will be able to raise awareness with their own members more of what the chalk bank is about and what we do to ensure its survival.

Please feel free to visit our banking;

at any time of year there will be something to see or hear. It is a varied and beautiful place and we are sure you would be surprised by its changing face throughout the seasons. Remember it is both a rare and historically important environment which we hope you enjoy as much as we, the Conservation Group, do. It is free to visit, is part of the Area of Outstanding Natural Beauty (AONB) and is one of the Chilterns' jewels. We invite you to come and soak up its calm beauty.... all are welcome; bring your children and your dogs. ***

Just come along, bring a smile, open eyes, and a light tread. And enjoy!

Regards,
Your Village Hall Chalk Bank
Conservation Team

*** Please don't let your dog fertilise the grass – it is contaminated and is only one of the reasons that our hay, after the grass has been cut, cannot be used as animal feed or put to any other farmyard/horticultural/ domestic or commercial use.



Small Skipper Butterfly; native.



Rose Bay willowherb; invasive

Images: John Moorby/Conservation Group

Hughenden Parish Council

From the Clerk

In spite of there being staff vacancies over the past few months that need to be filled, the Council has been able to make headway with a number of key projects. Our fifteen Open Spaces are being reviewed to plan for their futures with significant progress being made; for example the community renovation of Cockpit Hole, the detailed plans for Burnham Meadow and Spinney and the development of the Old Allotments in Great Kingshill. The Garden of Rest has been further landscaped and the allotment management significantly improved.

Speeding, a high priority for residents, has seen community speedwatch continue unabated thanks to volunteers. The speed signs are returning after being damaged when the batteries were stolen. Contractors have been keeping the hedges and verges tidy, and tree removal continues when they, unfortunately, succumb to disease. We have also provided several grants to village halls and others to improve their facilities.

The Council now has an experienced Locum Clerk, Philip Truppin, who is



**HUGHENDEN
PARISH
COUNCIL**

working to bring stability back to the Council and to bring us back on track after the past two years of volatility. There are still some Councillor vacancies and residents who wish to contribute to their community in that way can contact the Locum on clerk@hughenden-pc.gov.uk.

For further information contact the Locum Clerk on clerk@hughenden-pc.gov.uk or telephone 07518 810192.

Hedge Cutting

Hughenden Parish Council has recently signed a contract to maintain the hedges it owns. However, there are far more hedges owned privately that also need to be maintained. It is essential that no hedges are allowed to obstruct pavements, forcing pedestrians to walk in the road risking being struck by vehicles. The Parish Council is responsible for requesting householders to carry out such maintenance and ultimately Buckinghamshire Council has

authority to carry it out themselves and charge the householder. To avoid this hassle, please ensure your hedge is not overgrowing onto the pavement.

Stan Jones
Chair HPC

Press Release

The following is the official news release concerning the Extraordinary Meeting of Hughenden Parish Council on 26th September.

"The Hughenden Parish Council is committed to embedding the Civility and Respect Pledge throughout its organisation, including its day-to-day activities, Council debate and

decision making. It does not tolerate behaviour that falls short of this commitment. Earlier this year the Council made the difficult decision to sanction one of its Councillors and require her to carry out some remediation activities. Sadly, Cllr Derrick has failed to demonstrate any willingness to understand the impact of her behaviour that falls short of this commitment, and much less, to apologise and correct her actions. The Council believes this to be a further breach of the Code of Conduct.

The Council has now decided to make a formal complaint to the Buckinghamshire Council Monitoring Officer."



turville
PRINTING
SERVICES LLP

- Brochures • Leaflets • Letterheads
- Business Cards • Newsletters
- Compliment Slips • NCR forms
- Canvas Prints • Posters & More

For all your printing & design requirements

Turville Printing Services LLP
Unit 2, 67 Verney Avenue,
High Wycombe, Bucks. HP12 3ND
info@turvilleprinting.co.uk

01494 520322
www.turvilleprinting.co.uk

Hughenden Street Association (HSA)

Keeping in touch during the winter months

As the nights draw in and Winter announces its imminent arrival, we look forward to nights spent snugly indoors with the optimism of lots of new programmes on the TV (ahh, if only!) to help us while away the hours. Across Hughenden there are many communities: immediate neighbours, streets and villages that have a strong track record of mutual support. This was shown clearly during the pandemic and continues as 2023 draws to an end. Hughenden Street Association (HSA) continues to encourage neighbourliness whilst recognising that for some people this time of year despite the short days is, in many ways, just like any other. The default of someone living 'alone' and therefore being 'lonely' needs to be challenged. Whilst for some people this may be true, for many others it really is not a concern. I recently met a woman who lives on the edge of a village with a few neighbours down the road. She and her husband join in the 'community events' that take place during the year and know that if they (or indeed their neighbours) needed help that they would be there for each other. For most of the year,



she is happy pottering around her garden, reading and occasionally travelling to see friends. Her husband loves the warmth of the sun and spends quite some time abroad. She enjoys what we might call her 'solitude'. This might fill us with horror! One of the aims of HSA is to build a support network that is there when needed. Our popular Pub Lunches are a great example of this in action. Some people are happy to come along on the first Wednesday each month to the Harrow on Warrendene Road, others also like to attend the lunches at the Full Moon in Little Kingshill and the Black Lion in Naphill. Getting together for a couple of hours to chat with friends, old and new whilst having a tasty lunch can provide the social interaction needed to help us feel involved. If you have not yet experienced the gathering at the Harrow, then why not get in touch with Anne Smart who organises the event on 07970 037419? It is important to pre-book the Pub Lunch.

Another way to keep up to date with local events and issues is to receive our weekly e-newsletter. Working together we hope to reach more people and provide useful tips and information to keep everyone safe.

Our newsletter is also published on our Facebook page. Just search for Hughenden Street Association.

Hilda Stearn
Communications Coordinator
Hughenden Street Association
E: hughendensa@gmail.com

Your Conservation Group



The Hughenden Valley Conservation group need **two** new volunteers to help us maintain and improve our wonderful Chalk Bank situated adjacent to the Village Hall.

We meet once a week on a Tuesday afternoon at 2 o'clock and work until 4 pm when it's time for tea and cake!

It's a free outdoor gym taking in breathtaking views and the best fresh

air in Britain.

Absolutely no experience necessary, we supply all that's necessary, you bring your willingness to cut/slash/burn/crop/hedge lay/ and nurture all types of flora and fauna.

If you have any interest at all or any questions please ring Bev on 07793 546580.

Protect Your Festive Online Shopping from Scammers with these tips!

The festive season is undoubtedly a time of joy and celebration, marked by the exchange of gifts and the spirit of giving. However, it's essential to be aware of the lurking pitfalls when it comes to online shopping during this time of year. As the demand for online purchases grows, so does the risk of falling victim to scams.

Fake emails or texts you receive about amazing offers may contain links to fake websites, designed to steal your money and personal details. Not all links are bad, but if you are unsure don't use the link, go separately to the website.

If you're making a purchase from a company or person you don't know and trust, carry out some research first and, if you decide to go ahead with the purchase, use a credit card if you have one, as most major credit card providers insure online purchases.

Regularly update your devices with the latest software and app versions or, even better, just turn on automatic updates so your device will update itself in future!

To give any online account additional protection, where possible, you should turn on two-factor authentication for the service you're

using to double check that you really are the person you claim to be, when logging in.

We send you all our Seasons Greetings and best wishes for a safe, and healthy Christmas & New Year, from the Committee of Wycombe District Neighbourhood Watch Association.

Email : office@wdnhwatch.plus.com

Facebook: @wycombenhw

Instagram: @wycombenhw



Final note, a resident has reported to the Editor a scam that was new to them. A letter was received in the post from an unknown person but claiming "to be thinking of you, do call on". So just a paper version of various emails we've all seen.

Hughenden Community Support Trust

I would like to introduce you to this local charity whose objectives are:

- (1) the relief of persons resident in the area of benefit who are in need, hardship or distress.
- (2) the trustees may relieve persons in need by:
 - (a) making grants of money to them; or
 - (b) providing or paying for goods, services or facilities for them; or
 - (c) making grants of money to other persons or bodies who provide goods, services or facilities to those in need.

We are in a position where we can offer grants to residents in our area of benefit, Hughenden Parish, who may

need a little help, e.g. school trips, special equipment, respite care, etc., particularly, in these difficult times.

Grants have to be awarded to those in need who cannot afford such items.

Application forms for grants can be obtained from the Hon. Secretary by email to lyn.marchant@btinternet.com or to the address below.

Registered address :
Hon. Secretary, "Brambles", Grange
Road, Widmer End, Buckinghamshire,
HP15 6AD
Charity Number 248607

A Happy 100!

In September Geoffrey West of Orchard Close celebrated his hundredth birthday and received his congratulatory telegram from the King.

Mr West is a Buckinghamshire man, born and bred. In his youth he attended the Royal Grammar School where he played Rugby and Cricket for the school teams.

As a life-long supporter of Wycombe Wanderers, Geoffrey fondly remembers Loakes Park and its sloping pitch.

He was the manager of the Desborough Road branch of the Midland Bank. In retirement Geoffrey has been involved in pastoral work for the Free Methodist Church (Vibe) and as a volunteer at the Wycliffe Bible Centre in Studley Green.

High Wycombe and District u3a

Autumn has been a busy time for us. Our Italian Conversation and Rummicub Groups are now up and running and our Psychology Group is well established. The first topic of the season (Who am I?) attracted eighteen members. Our Convenor has put together a challenging and thought provoking programme.

Following on from the visit to The Archaeology Monastery site and John Lewis Heritage Centre at Cookham (see picture), our Local History Group heard from one of our members tracing the fascinating History of Piddington Village. In 1902 there was nothing there, just fields and farms. But Benjamin North, a furniture manufacturer and devout Wesleyan Minister, changed all that! The Group is moving on to understanding *What*



Remains of Roman London and is looking forward to a presentation on *The History of The London Docks*.

Our Creative Crafts (see picture), Art and Photography Groups participated in the brilliantly organised Flower Festival at St Michael and All Angels Church in Hughenden on the August Bank Holiday weekend. The church flower arrangements were stunning and many visitors enjoyed the afternoon teas provided. The flower displays can be viewed on the church website.

The Eden Centre generously invited us to attend the Silver Sunday event



in October. Twenty members enjoyed the complimentary afternoon tea and film show.



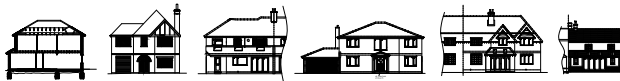
We will be at the Wycombe Christmas Festival (November 18 in the High Street) with our tombola stand and having our Christmas Coffee Morning at Naphill Village Hall on 13 December. Come and see us there.

This just gives a snapshot of our activities. You can find more information in our displays at the Wycombe Library on the second floor. Or you can ring Paul on 01494 562843 or contact me. We also have a website (<https://u3asites.org.uk/highwycombe/welcome>) and Facebook page (facebook.com/hwdu3a2022).

Judith
hwu3asecretary@gmail.com



Chartered Building Surveyor based in Hughenden Valley



**HOUSE EXTENSION DESIGN
PLANNING & DETAILED DRAWINGS
PARTY WALL
BUILDING SURVEYS**

For further information contact

Jason Wood BSc (Hons) MRICS MFPWS
tel: 01494 562547; mobile: 07791 503607
email: jason@applewoods-surveying.co.uk
www.applewoods-surveying.co.uk
www.applewoods-partywall.co.uk



Pupils' reports on moving up

Starting a brand new school filled with unfamiliar faces is certainly a scary experience. But I'm already finding it hard to believe that just three weeks ago I could easily get lost even in the smallest buildings. It feels like I've been there for years, now that I've adjusted to all the changes.



My main worry when starting a new school was that I wouldn't make any friends, although that turned out to be one of the easiest parts. The main advice I followed was just to be nice to everyone and be yourself. Luckily for at least a week, teachers won't give you homework or tell you off if you're late to class, as they know that it's difficult to suddenly change from primary school to secondary. Overall, starting secondary school brings so many changes, but it makes you feel

more responsible and mature, as well as definitely more tired!

Ottillie Harwood

My time at the Misbourne has been amazing, though I have only been there a few weeks, everyone has been kind and welcoming. From holding the door open, to telling me my bag was unzipped, other students have really helped me. I've had to get used to a lot more homework and getting on the bus as well as being a lot busier in general but I know it will get easier the more I do it. I've also made a great group of friends as well as still seeing some of my old ones from Hughenden Primary.

Ursula Mounsher



I was both excited and nervous about starting secondary school. After spending seven years at my primary school, my friends and I were heading in different directions. I did not know what to expect, whether I would be able to make friends and find my way around such a big school. At first I was annoyed about going to Summer School because I was back at school when everyone else was out having fun. We really had fun though and it helped me make friends as we did



activities that involved us working in teams. The teachers and teaching assistants were really kind, helping me and my new found friends to find our way around, of course the map really helped too. I used to walk to primary school, which was so great as I could get up late and still get to school on time. Now I get the bus, which worried me because I had to be up earlier, get to the bus stop and sit with people I didn't know. I mean,

what happens if I'm late, miss the bus or if there is no seat for me? It turns out that there was nothing to worry about, it is a bit of a challenge to get up so early, but I get to sit with my primary school friends. The lessons are all fun and the teachers are really nice and now I feel confident about my secondary school journey.

Dillon Booth

On my first day at secondary school, I felt a mix of emotions: scared, nervous, excited and many more. It was a massive step up from primary – everything was so much bigger! On the bus to school, there was only the year 7s as the rest of the school was back the following day. There was 5 of us year 7s including me (2 of which I already knew). I instantly made friends with those that I didn't know. The first day was mostly filled with questions about the school and getting used to what life would be like. The second day consisted of an extra-long registration and my first true lesson - which was Geography. It wasn't until the 3rd day that we had a full day of lessons. I was surprised at how quickly I have adjusted to my new school life and how approachable, kind and funny (some of) the teachers are. Now we are at the end of the first half term, I don't need my map or timetable anymore! In the first few weeks at school,

HUGHENDEN VALLEY
VILLAGE HALL
COOMBE LANE, HP14 4NX

CHRISTMAS

Craft & Gift Fair

Saturday 25th November

10am-3pm

*Over 25 amazing
Craft and Gifts stalls*

*'Unique Christmas Gifts for
the whole family'*

Christmas Cafe



intensive trials for the school sports teams took place, with many boys all competing for only a small number of places on each of the teams. I have made it into the first team for football and rugby and we have played our first few matches already. Overall, my first few weeks have been really enjoyable and I am really happy there.

Lewis Cawley

News from St Michael's Church

After the closure of the Church for a week, during which time a combined service (i.e. combining the usual Sunday morning services) was held in Hughenden Primary School, and other meetings held in Church House, the new step free access was available for use on a bright sunny Sunday. The old -very worn, and trip hazardous- sandstone threshold has been retained for posterity and currently resides under the yew tree. Wheelchair, walking stick and buggy users, so far have pronounced themselves well satisfied.

The new entrance coincided with the Harvest Services where generous giving of food or finance donations

were made for the important work of the One Can Trust which provides the local food bank.

The (now Annual) Church quiz was held and pronounced a great success. Praise for the question master , organisers, and the providers of the fish and chip supper.

Remembrance Sunday will be marked by an Act of Remembrance on 12th November at 10.45 in between the usual 9 am and 11 am services.

Plans are already afoot for the Christmas celebrations which will include a concert from the Community Choir. Leaflets giving full information about service and concert times will be delivered throughout the parish towards the end of November/beginning of December, and also will be on our website.

In these troubled times, when danger, loss and heartbreak seems to beset the world, the Church can offer you a tranquil place to reflect or seek solace. The church is open to all in daylight hours. You are very welcome.

Jane Tyrer



St. Michael & All Angels

CHURCH IN THE PARK | LIVING, LOVING, SERVING

VILLAGE ENVIRONMENTAL SERVICES DOMESTIC DRAIN SERVICES

Proprietor: Dennis Cook
Est. 1979

**24/7
CALLOUT
SERVICE**

BLOCKED DRAINS?

CALL US DAY OR NIGHT

FAMILY RUN BUSINESS SINCE 1979

BLOCKED DRAINS CLEARED • REASONABLE RATES

**NO EXTRA CHARGE FOR EVENING, WEEKEND
OR BANK HOLIDAY CALLOUTS**

CCTV DRAIN SURVEYS

FULL PUBLIC LIABILITY INSURANCE



07850 635 844
01296 624 221 (MESSAGES)



Speen Helping Hospices

Supporting Helen House for Children,
South Bucks Hospice, Florence
Nightingale and Rennie Groves
Hospice Care

Speen Helping Hospices (SHH) was set up in 2002 to raise funds for and awareness of four local charities. Now, as 2023 draws to a close, we feel the fund-raising group can do more for these charities if we extend an invitation to local villages to participate.

All four charities need the support of local communities to help fund vital services for people across South Bucks, as they continue to deal with a very challenging financial climate. We are proposing that the name of the group is changed to Chiltern Villages Supporting Hospices (CVSH) to reflect the wider involvement.

Ways you can contribute:

Luxury Perfume and Cosmetic Sale:

Buy Estee Lauder cosmetics, Jo Malone and Tom Ford perfumes and many other products at vastly

reduced prices, courtesy of the Brand owners. Go to our website www.shh-shop.org and follow the link through to perfume sales.

Fundraising Challenge

We are looking for supporters to raise money for us when taking part in local events such as fun runs/half marathons/cycle races. We will support you on your fundraising journey by promoting your participation. If you are up for this challenge, visit our website at <http://www.shh-shop.org/FundraisingChallenges.htm> for information.

Future Events in 2023

Christmas Market - 18th November at the Chapel Hall in Speen open from 11.00 to 14.00 . We have lots of new stallholders and a wide range of gifts for Christmas.

Please visit our website www.shh-shop.org to find out more about us. If you would like to get involved, please contact me:

grainnesuter@googlemail.com
or 07778803260.



Speen Helping Hospices
Fundraising since 2001 for local hospices
in Chiltern Villages

Helen House for Children - Rennie Groves Hospice Care - South Bucks Hospice - Florence Nightingale in-Aylesbury

Wycombe Environment Centre Meeting



On a foggy October evening, several local environmental groups were invited by the Wycombe Environment Centre (WEC) to discuss their work and exchange ideas at St Michael and All Angels Church. For those who aren't familiar with WEC, they are a charitable organisation whose prime focus is on circularity: the reuse of materials that would otherwise be discarded. In their current guise, the WEC can be found at the Refresh Shop in the Chiltern Centre where anything from fabric to coloured card and much, much more can be purchased for a minimal price. These craft items, which would otherwise end up in landfill, are donated by companies who no longer need them. The Refresh Shop will soon be moving into larger premises (the old 'Life on Mars' nightclub and before that, the old post office, in High Wycombe) and plan to run craft demonstrations and makers workshops as well as include a café into the hub. It should be a fantastic space and deserves our support.

Our meeting included environmental groups from Speen, Great Kingshill, Princes Risborough, Prestwood and Hazlemere as well as Hughenden: in

total around 12 different organisations and each group was given time to discuss the work they had carried out to date and then to exchange ideas with others. Speen's Environmental Action Group for example, have done a lot of work for their local community to share information and resources in terms of energy: solar power and air source heat pumps. It can be confusing trying to navigate the new systems that are out there but Speen have now managed to remove itself from the gas grid as a result of the work they have done.

Other schemes included:

- rewilding verges
- creating a local Whatsapp Group of needs and wants (i.e can I borrow a drill? I have a glut of apples - any takers? Does anyone know how toetc etc)
- how to talk to people about environmental concerns
- how to influence local politics
- how to drive a local initiative and who to ask for help (the clearance and rejuvenation of Cockpit Hole in Great Kingshill is a good example of this)

Hughenden Climate Group came away from the meeting with a lot to think about and carry out in the new year - we hope you can be a part of it.

Refresh

THE MARKETPLACE



**fabrics
haberdashery
paper foam card
plastics foil
craft materials**

Scan the QR code to visit our website

Come and visit our Scrap Shop

in the Chiltern Shopping Centre

Wednesdays 1:30pm - 4:30pm

Saturdays 10am - 4pm

You can Shop, Donate, and Volunteer

 @refreshwycombe  refreshwycombe

www.refreshwycombe.org

Find us at Unit 8 Chiltern Shopping Centre High Wycombe HP13 5ES

Follow Wycombe Environment Group and Hughenden Climate Group on Facebook for updates.

<https://www.refreshwycombe.org/>
<https://en-gb.facebook.com/WycombeEnvironmentCentre/>
<https://www.facebook.com/groups/891561211489875>

Medlar Jelly

Medlars, like quinces and apples are from the rose family and are hardy, undemanding and slow growing fruit trees. Below, is a recipe from John Moorby of the Conservation Group who suggests serving medlar jelly with meats and cheeses.



Medlars must be “bled,” which involves storing them in a single layer in a rather cool place, not the refrigerator, until they are soft and brown inside. They’re ready when they are very soft and squishy to the touch.



3lbs (1.4kg) medlars, (bled)
1 green apple
½ Lemon
3 cups (600g) sugar

1. Rinse and quarter the medlars and put them in a large pot - skins, seeds and all. Chop up the apple and add, with the seeds and core as well. Then add the lemon half to the pot and pour in enough water so that the medlars are floating in the liquid (about 2 litres).
2. Cook the mixture until it begins to boil and then reduce the heat and let it cook at a low boil for 45 minutes.
3. Line a colander with several layers of cheesecloth or gauze, set it over a deep bowl and ladle the cooked medlars and liquid in. Let it strain undisturbed overnight. Do not press down on the cooked fruit or your jelly will be cloudy (it is very tempting but resist!)

4. The next day, pour the liquid into a large pot - you should have about 1 litre. Put a small plate in the freezer. Add the sugar to the juice in the pot and cook the jelly until it reaches 104°C or until it gels, which may happen a little above or below that temperature. To test the jelly, put a spoonful on the plate in the freezer and let it chill for a few minutes. If, once cold, it wrinkles when you push it with your finger, it's done. If not, continue to cook the jelly until it gels. When ready, if you wish you can offset the sweetness with a few drops of lemon juice.

5. Before ladling into jars make sure they are well washed, rinsed with hot water and dried, then sterilized in a hot oven for 10 minutes. Alternatively, jars can be washed in a standard wash cycle in a dishwasher.

Cover filled jars with a disc of waxed paper (wax side down) while jelly is still hot. Add a cellophane cover and secure with an elastic band or add a sterilized screw-topped lid. (Discs, covers and bands are available to buy in packs.)

SPICER PLASTERING SERVICES

All types of internal and external plastering undertaken including:

- Artex ceilings re-plastered to a smooth finish
- Damp problems rectified
- Rooms re-skimmed

Over 30 years experience

Fully insured

For a **free** quotation or advice contact



Ian Spicer 01494 562958
or **07973 553960**
e-mail i.spicer288@btinternet.com



FRASER-MORGAN SCHOOL OF DANCING

****** Naphill Village Hall ******

RAD BALLET for ages 3+



**For more information
please contact:**

**01494 816539 or
07974 121081**



Your Village Store and Coffee Shop

We are your traditional, and community-owned, village store and coffee shop - a community hub serving all day hot food and drink and everything you would expect from a village store and cafe.

We hope that you will be able to take the time to read our flyer enclosed in this newsletter. The last few months have been difficult and compounded by the roadworks in the immediate vicinity.



Visitors from out of the area often tell us how lucky we are, and how they would love to have a place like this in their village. However, sometimes it is easy to forget what a treasure we have, so we thought that we would provide a little reminder of what we do.....

We have ALWAYS carried out free home deliveries to anyone who needs us - from a parent and sick baby to the elderly and housebound - and we continue to do so.

We support local schools and organisations by donating Hampers, vouchers and Cream Teas for their fundraising events.

We have high-chairs, baby changing facilities and children's meals.

We help support over 25 local suppliers and independent businesses.



We are open 7 days a week.

We sell stamps and have a notice board. Orders can be taken for any bread and meat for mainly next day delivery – at no extra charge.

We provide cash back on all purchases over £1.



We have fresh bread and bakery 5 days a week, fresh local meat 7 days per week.

“It’s like having a bakery in the village!”

We sell cat food, dog food, household, toiletries, fruit and veg, cooking and baking essentials.

We sell cards and gifts.

We have a full all-day menu with GF and Vegan options.

We provide paid employment to nearly 20 staff – from weekend first jobs to supervisors.

We are dog-friendly.

We provide Duke of Edinburgh volunteer placements for Students carrying out their Bronze, Silver and Gold awards.

We are a lifeline for many, and a place to meet - a real place to just be.



If you can, please help us to keep your village store viable.

Visit us on Instagram and

Facebook: at

HughendenVillageStoreandCoffee Shop

Thank you.



Hughenden Allotments and Gardens Association

Hello Plotters,

STRANGE TO SAY, BUT...

10 Oct as I write, still in the middle of a late summer blast of good weather; the result of an Azores high pressure keeping the SE of UK (at least) unseasonably warm. It's making up for the hit-and-miss summer we have had. There are still many summer flowers out, bees and other pollinating insects are about, although the leaves are turning and beginning to fall and the bird population is beginning to change – the spring/summer residents are leaving for warmer climes while winter visitors are beginning to show up. Let's just hope that they don't get too confused or out of sync with the season and find their food sources disrupted. We can of course help our garden visitors by having bird feeders (and keeping them topped up!) but remember to supply insects (dried meal worms especially) for the non-vegetarian birds.

There has been a Song Thrush visiting my garden over the last few days. For one mad moment I thought it was a Fieldfare but looking closer, sadly not. Still, a Song Thrush is an infrequent visitor to my garden, so I shouldn't be ungracious. All the other stock characters (though no Stock Doves!!) have remained with us since my last

report, although I think Merle and Oberon might be debating whether or not to go on tour. The chief Robin is really busy, repelling all invaders on his territory.....he does eventually tolerate the Blue and Great Tits on the bird feeders - once he realises they are blue, not brown with a red front, and therefore no threat to his territory. The Collared Doves look on in quiet amusement, wondering what all the fuss is about; the Fifth Columnists carry on being generally subversive and the Wood Pigeons just make a mess with the food and mournfully repeat, over and over "I don't want to go.... I don't want to go." The stars of the feeders are, as always, the Gold Finches: they brighten up even the dullest days and they stay feeding long enough at each visit to make you feel they appreciate what is put out. Unless we get something really extraordinary taking up regular visits (maybe Tree Creepers, Nightingales, Cettis Warblers?!) the Gold Finches will retain star billing.

In the garden there have been continuing surprises – some good, some bad ...

You will remember that I reported the loss of my bomb-proof Fuchsia bush (originally transplanted from Scotland. Well, it is bomb-proof after all.... Two new branches have made

an appearance over summer, so fingers crossed that they will harden-off enough to survive this coming winter and properly re-establish the bush. No Quince, despite lots of blossom. The fig tree got stressed, shed all its leaves and most of its fruit during the hot spell so no figs have since ripened. The Flamingo Willow also suffered heat stroke. It shrivelled and shed all its leaves in the space of a week then, as the weather cooled a little and after plenty of water, it took just over a fortnight to get back into full leaf. The Orange Blossom was truly special (Johnny Cash song?!) and lots of fruit set, which then proceeded to fall off over the following couple of months. It will go back into the greenhouse shortly; I notice it has flower buds developing, so more fingers crossed. Thank heavens for cherry tomatoes... I had two Sun Gold and two Gardeners Delight plants: Both turned out well and we've only just picked the last fruit. They went well with our equally successful Cucumber plants (3, from seed). They were the type I've stayed with for the last three or four years, "Emilie", which seem to be tolerant of most summer temperature fluctuations. I thoroughly recommend them.

The HAGA programme:

As advertised in the last article our July meeting was an open meeting with representatives of other Hughenden Valley groups (i.e. HV Residents Assoc; The Village Hall's Wildlife Conservation Group; the HV Climate Group). The intention to get to know each other better was certainly achieved and we all had an enjoyable evening, including a light-hearted quiz.

In September we had a visit to the Shuttleworth Collection in Bedfordshire: an excellent ornamental garden (the "Swiss Garden") and also the famous aircraft collection. Did you know that all the collection's aircraft (plus motor vehicles and motorcycles) are kept in full working/flying order – something of a rarity amongst even the best collections.

September was rounded-off with a presentation from an old friend of HAGA's, Marcel Floyd, who gave us an engaging talk about climbers as well as bringing a wide selection of his plants (for show and for sale).

The run-in to the season's end is catered for by talks, firstly on 27 October by Keith Hoffmeister: "Chenies Through The Year" and, on 24 November, "The Hughenden

Estate” a presentation by our “neighbour” – Claire Primett, Senior Gardener at the Manor.

Tell your friends about us, the talks and trips, the free tea and biscuits at our meetings as well as the shopping discounts.

As a member you will immediately become eligible for the following discounts:

Peterlee Manor Farm (Gardening Section only; excludes already discounted items): -10%

Hildreth Garden Centre (Gardening Section only; excludes already

discounted items): -10% (min spend £10)

Buildbase, Hughenden Valley: Variable discount according to item.

Dobies: -40% on seeds and -10% on other goods. (Requires Code from HAGA Social Committee to use when ordering).

The seasons continue to surprise us, so just go along with them and Dig it!

Andrew Flint
Chairman
Tel. 564 972

Daphne Hicks
Social Secretary
Tel. 562 170

Spindle tree and berries; native, local, and my 'Lazarus' Fuchsia Images: Andrew Flint.





Hughenden Valley Summer Fete 2024

*Join the team now and help deliver
next year's Fete*

*A lot of the heavy lifting is done, we just need to
finesse the plans done for this year*

*A little bit of behind the scenes admin and some input to
what the Fete will deliver to the community on the day*

For more information

email Peter at prspence@btinternet.com or Lisa at
lthyerjones@hotmail.co.uk

*There's a lot of **FUN** to be had so don't be shy -
we're a friendly bunch, well we were this year!*

Terracycle at the Harrow

One of Hughenden Valley Climate Group's first achievements when it began, was to install a Terracycle bin at the back of the Harrow car park. Terracycle are a company who deal with plastics that are hard to recycle such as crisp packets, pens and oral hygiene products but we have started off with a top 10 list to make it easier to remember. The bin is kindly emptied by another member of our group and taken to a central hub where it is sorted and sent to Terracycle. Companies such as Walkers Crisps pay for the cost of postage to Terracycle as part of their sustainability programme and a small number of points are collected for various local charities along the way. Recycled rubbish then goes on to



become raw materials such as plastic pellets or metal sheets.

Our local hub in Downley does an excellent job of painstakingly sorting and packing the waste to send off to Terracycle so it is vital that the bin is used correctly. Please check the list of what can be put in for recycling and follow the guidelines to make it easier for those who are sorting it:

- Crisp packets: All crisp packets including multipack outers. Please flatten, fold a handful and stuff inside another crisp packet. Folding single crisp packets or scrunching makes them much harder to pack.
- Bread bags: Any kind of stretchy plastic bread loaf bag but no wraps, crumpets, bread rolls, pitta, baguette, brioche or croissant - these can all go to Sainsburys.
- Oral care: Toothbrushes, toothpaste tubes and toothbrush packaging.
- Confectionary: All brands of confectionary but no foil, paper or rigid plastic packaging
- Biscuits and Snacks: Plastic biscuit and snack wrappers but no plastic trays
- Writing implements: Biro's, highlighters and marker pens
- Beauty product packaging: Flexible plastic tubes, sachets, lids, pumps,



easier for the team to deal with. Thanks so much for using the bin and do drop us a line via Facebook if you have any queries.

Visit Recycling and Terracycle around High Wycombe on Facebook to find out more about our local hub and www.terracycle.com to learn more about the Terracycle loop.

plastic roll on deodorant bottles and face wipe packaging

- Home Hygiene Packaging: Dishwasher salt packaging and cleaning wipe packaging
- Branded Printer Cartridges: Please separate cartridges from other packaging as they tend to leak.
- Can rings: Plastic rings traditionally found around 6 pack cans.

Please ensure that all items are separated and all food emptied from the packaging to make it



Not So Long Ago

I moved into Friars Gardens in 1965 with my parents and very young sister. At that time there were only about 12 new houses completed – all on the first right turn on the road. It was really easy to meet everybody, several families had children and friends were made quickly. I attended the old Naphill School in Pursells Meadow and settled in well. We had a very progressive Headmaster and maths lessons centred around counting the traffic!

At the bottom of Friars Gardens there was an old-fashioned garage with petrol pumps and a local shop. My Mum used to fill in her little order book every week and her groceries were delivered directly to her. We also had regular visits from the milkman, baker and the lady from an egg farm in Boss Lane. When the petrol station was rebuilt and became a BMW franchise, the redevelopment included new premises for the shop and we also had a hairdressers, run by Mark.

We attended the local doctor's surgery, just a few doors down from the current medical centre – Drs Ernst, Streule, Carless and Isaac. At the bottom of Coombe Lane there was another general store combined with a Post Office and run by Richard in later years.

As development of the whole of Friars Gardens didn't start properly for some years, we had open land backing onto our garden where we could play and the residents built huge bonfires for Guy Fawkes night. There was so little traffic we could play uninterrupted in the road – skipping, biking, football and tennis and especially roller skating.

Opposite the entrance to Friars Gardens there was an orchard on the left hand side and on the right, pasture land later to be developed by Lovells. I very soon noticed stables and horses and that was where I learnt to ride, taught by two cousins from the Babb family, and which started my life-long love of horses. The Harrow Public House was very well used, run by landlady Dorothy and her mother. Parents used to enjoy congregating there in the warm summer months; we could play in the garden and have bottles of lemonade and crisps. We attended events at the Village Hall – just the one Hall in those days - lots of birthday parties, Brownies and dancing classes.

It was a very happy place to live and my husband and I were delighted to move back to my former home in Friars Gardens three years ago. My grandchildren visit often, so a full 'circle of life' for me.

With many thanks to Sue Grace for the above memory of life in the Valley in the 60's and 70's.

ooOoo

Do you live in Bryants Bottom or on Cryers Hill and maybe you or your neighbour have an interesting story to tell.

Please do contact the Editorial team at Hughenden News (details on the Information pages). You may wish to write your own piece or we can provide some assistance if required



MASSAGE ?

In need of a massage?

Remedial – for bad backs, necks, shoulders, sciatica

Sports / Deep Tissue
Manual Lymphatic Drainage

Or just for pure **Relaxation**?
Call Pamela to book your appointment

07759 831706

Treatment room in Naphill

FHT registered

The logo for Turners Electrics, featuring the word "Turners" in green and "Electrics" in blue, with a stylized lightning bolt graphic to the left.

**Turners
Electrics**

Olly Turner

☎ 07776 200999

🌐 TurnersElectrics.co.uk

✉ Olly@TurnersElectrics.co.uk

- Friendly family run electrical company
- No job is too small
- Please call or email with any enquiries
- Based in Hughenden Valley

Advertorial - High Income Child Benefit Tax Charge



Louise Marshall FCCA is an Associate Director at Seymour Taylor Accountants who are based in High Wycombe.

Q – I receive child benefit for our two children but my partner has got a new job and is now earning over £50,000 per annum, am I still eligible?

A - Yes you can still claim but you may need to pay a child benefit tax charge dependant on his net adjusted income. If your circumstances have changed and you are in receipt of child benefit you must inform HMRC. There are lots of different circumstances that can alter this depending on who you are living with and whom is in receipt of the benefit so I would advise that you check out your own circumstances at <https://>

www.gov.uk/child-benefit-tax-charge. The general rules are that once your net adjusted income exceeds £50,000 your child benefit is reduced up to the point in which one of you earns £60,000 your child benefit entitlement is £Nil. The partner who has the highest income in a particular Tax year is the one responsible to pay the Tax charge.

There are some reliefs like certain personal pension contributions and gift aid that may be able to reduce the amount you owe, so worthwhile getting advice from a tax adviser. They will also be able to advise what is included in your net adjusted income.

If you believe you may need to pay the Higher Income Benefit Tax Charge for the 2022/23 tax year, it is advisable to submit a Self-assessment return prior to 30 December 2023. You can then request for any tax charge due to be included with your PAYE Coding notice for 2024/25 so that this is spread across the year through a deduction from your earnings rather than having to pay in full by 31 January 2024 if you would prefer.

Contact Louise at
louise.marshall@stca.co.uk or call
01494 552100
www.stca.co.uk

“Robin Hood”

By Brewster and Webster

Hughenden Valley Players are proud to present
our panto 2023!

Save the dates!:

December 7th, 8th and 9th

Hughenden Valley Village Hall

Tickets: £12. Children 5-16 £8, Under 5s free

(Available November 6th via website and TicketSource)

www.valleyplayershughenden.co.uk
contact@valleyplayershughenden.co.uk

noda

Valley Players at Hughenden Primary School



King Richard took time off from rehearsal to present the prizes for the pumpkin carving competition organised by the Friends of Hughenden Primary School.



Valley Players

Ready, Steady, Go! Oh yes we are!

Valley Payers are working their socks off in rehearsals for "Robin Hood". The Sheriff Is practising being nasty. Robin and Marian are rehearsing being in love and the Merry Men are working very hard at being merry.

Well perhaps you are now practising counting the number of tickets you would like and rehearsing telling your friends and relatives what a good time they will have. Oh yes they will.

To book tickets you simply go to our website, click on the Robin Hood poster image and you will be taken to the Ticket Source booking page. Ta Dah.

We're looking forward to entertaining you.

Andrew Pitman (Chair,
Valley Players)

contact@valleyplayershughenden.co.uk



A. HOLLICK
Building Contractors

Local firm established over 30 years. Specializing in extensions and all types of home improvement projects using our highly experienced team of contractors.

Tel : 01494 563020
Mob : 07930745363
Email : alanhollick63@gmail.com

West View
Cryers Hill Road
High Wycombe
Bucks
HP15 6JS

The “Lego” Houses

Do you know where I mean? I bet you do. An apposite name for so distinctive a style! My apologies if any residents object to my mentioning this fact. I only mention it because of my admiration for the unique and rather bold statement it must have made in its day.

To prepare for this article, Hughenden News has spoken to a couple of the earliest residents who can recall the very early days of this estate comprising: Frogmore Close, Orchard Close, Fleet Close and Spring Valley Drive.

Our first visit took us to the door of no 20. It was a day in early October, balmy this year, flowers still in full bloom, lawns immaculate and so green.

Colin Brand moved in with his first wife Joyce in 1971. The two youngest of his three daughters were born in the house where he still lives with second wife Marion. Sadly Joyce died in 2002.

Colin and Joyce were the second residents to move in. They would have been the first were it not for Lovells’ efforts to complete a property across the road (No 2) because the lady of the house was due to give birth. We wonder if the

large house builders of today would be so accommodating!

Apparently Frogmore Close marked the start of the building work and it was practice then to build houses in batches of about four, complete them, then move on to the next batch. In 1971 you would get change from £15,000 for a house on Frogmore Close with only a £50 deposit!

Cherry Tree Close was next to be built and then Fleet Close. Very much like the children of Friars Gardens some 10 years before, as the diggers moved in, favourite play spaces and dens in the trees were lost: brand new houses appeared.

Spring Valley Drive leads to the school, which was built in 1972 and just provided for 5 to 8 year olds.

Colin has many happy memories, recalling driving to Wycombe early in the morning to catch the steam train to Marylebone and how he would have his “own” seat in those days of polite travelling.

Next, we crossed the road to No 1 Frogmore Close where Caroline Clegg has lived for the past 51 years, alongside her late husband until his death in 2022. No 1 was the Lovells’

show house but that of course meant a delay in occupation. They moved into their house in the June of 1972.

Caroline and her husband ran a light engineering business in High Wycombe, selling dust extraction equipment control panels to several, well-known, local businesses.

They had two daughters, one of whom now lives just round the corner in Orchard Close. Even her daughter's husband was brought up on the estate in Fleet Close. This is very fitting testimony to the enduring popularity of these four closes. Several houses are now occupied by second generations of the same family. The gardens on the estate might be termed compact when set beside the houses dating from the 20's and 30's elsewhere in the village but this was never a disadvantage and many residents took the opportunity to flex their green fingers

on the Whitfield Rd allotments. Indeed Caroline at one time had four allotments but is now down to just the two.

The design of the houses remains distinctive with the first floors being of timber frame construction. Guttering and rainwater gulleys run within the outer framework of the houses and many retain their interesting tiled first floor facings. Covenants restrict the division of individual front plots with hedges and the keeping of chickens is prohibited!

Lovells won an award for the design and execution of the Estate. There may have been some rainwater issues and in latter days most have been insulated to a higher thermal rating than the original construction brief but on the balmy October day when we visited the lasting appeal of these houses is indisputable.

L Cannon

SEE BETTER

Harnessing the power of the most advanced
eye care technology on the planet.

For you and your whole family.

JACKSON & Co EYE CARE

INDEPENDENT OPTOMETRISTS AND HEARING SPECIALISTS

247 Main Road, Walters Ash // 01494 564600

Hughenden Valley Football Club

Hi Everyone, I hope you all had a great summer and are now enjoying the new football season!

It might not have been the best summer weather-wise, however the Football Club was blessed to at least have a dry day when we celebrated last season's efforts with our AGM and Fun Day. And what a day it was! The one day a year when we all get together as a Club – the Committee, our Managers and Coaches, Parents, Players and Supporters – to celebrate and reflect on another year of fun football for children aged 5 to 17!

This year we were privileged to welcome Trevor Stroud, Director at Wycombe Wanderers Football Club, as our guest of honour. Trevor was extremely complimentary about what we do and referred to HVFC as a “model club”. High praise indeed from someone who has invested so

much time to the game and was instrumental in the most recent development of Wycombe Wanderers by helping to bring Rob Couhig to the club.

Each year we announce our prestigious Club Awards, and this year was no different as Trevor made the following presentations:



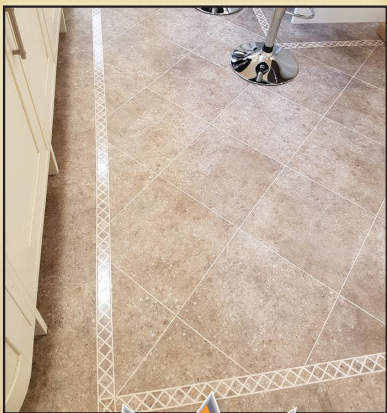
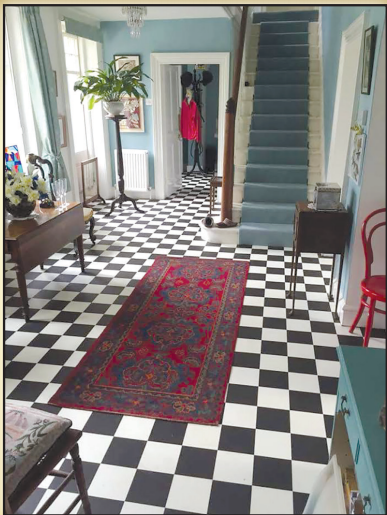
Old Hughendenians Manager of The Year Award - Mark Bowring, Manager of the Under 16s Hawks.

10-year Long Service Awards went to George Newman, Alex Wainwright, Jack Henry, Haydon Kelloway, Oliver Dell, Oscar Martin, Joseph Baker, Callum Burke, Harvey Selleck, Jake Mabey, Toby Bartlett, David Evans, Ollie Phillips, Braden Murray and Harvey Atkins.



Hughenden Valley is a model club that offers a great football experience for kids of all ages"

Trevor Stroud (Director, WWFC, and Guest of Honour)
HVFC 2023 Awards Ceremony



Like the flooring
in your
Community Shop?
...we did that!!



- Wood Floors
- Carpets
- Amtico/Karndan
- Natural Carpets
- Vinyl Floors
- Floor Preparation

**01494
862311**



www.SJFlooring.co.uk
your local flooring company



Terrance Bellamy Award for Outstanding Contribution awarded to Graham Hall (Under 16s Coach and all-round top bloke!)

A great day was had by all and I would like to thank everyone who contributed to make it such a success.

On the pitch.

We have now started our 49th Season and, as I write, we have over 400 registered members and over 200 registered players, all of whom receive weekly updates from our brand-new website at HVFC.co.uk. If you haven't already done so, please sign up – you can join just as a supporter if you want to just so that you don't miss out on all the football news.

We have a total of 14 teams playing in the famous black and white strips every week and all enjoying football in a safe and fun environment, thanks

to our coaches and our playing facility partners. I recently met with Ian Newton, the Headmaster of St John's School, Lacey Green, who are supporting us again this year by allowing us to use their football pitch for training and match days. Ian, a Lincoln City fan, is delighted to be supporting our club, recognising the important role that grassroots football clubs play in the local community. Thank you, Ian, for your



ACCREDITED
PART OF ENGLAND FOOTBALL

continued support.

Off the pitch.

This club would not exist without the support and commitment of our volunteer managers and Coaches – please make sure you show your appreciation every now and again, it really does help the team to know their efforts are appreciated. One crucially important role, without which we simply would struggle to cope, is that of Club Treasurer.

Ben Richards “volunteered” for this role when I met him whilst walking our dogs across King Georges Playing Fields. Being the kind-hearted chap he is, Ben jumped at the chance of supporting the club that both his



Ben Richards

boys play for. So, I thought it would be nice to show our collective appreciation in these pages, as well as giving you the chance to learn a little more about the tallest member of our committee.

What do you love most about HVFC?

- The fantastic camaraderie and spirit among the players and supporters in all of the teams

Best memory whilst with HVFC?

- Being a fairly unconvincing Santa-Goalie for the Under 11s a couple of years ago

Funniest moment at HVFC?

- Being kicked in the unmentionables on my refereeing debut for Josh's team (although I wasn't laughing at the time!)

Favourite Team?

- Ipswich Town first, and Hughenden Valley U 14s second

Favourite half-time snack?

- Bacon Roll from the Village Shop

Tell us one thing we don't know about you?

- I played for Luton Town U12s and U13s!

Thank you, Ben, for everything you do for our Football Club!

A date for your diary; 22nd June 2024 will be the date for our 50th AGM & Fun Day!



As always, please do let me know if you have any ideas about how we can improve HVFC or if you would like to volunteer – we are especially keen for people to help with our fund-raising events.

Good luck to all our teams – remember to enjoy every minute!

All the best and...COME ON THE VALLEY!

Cheers
Dave Hilling
Chairman HVFC

Join us on Facebook, Instagram and Twitter, and visit us at hvfc.co.uk.

Painting, Decorating and Carpentry Stuart Gibbons

SC Gibbons
Challock
Valley Road
Hughenden Valley
HP14 4PP

Tel: 01494 563257
Mob: 07876 155747
Email: scgibbons@hotmail.co.uk



PREMIUM Plumbing and Heating

*Specialists in Plumbing, Heating
& Bathroom Installations*

Tel: **01494 256175**
01844 346946

Michael: **07737 007809**
Glynn: **07834 734491**

info@premiumplumbingandheating.co.uk

www.premiumplumbingandheating.co.uk



Press releases from Buckinghamshire Council

As usual here are some recent notices from BC that may be of interest. All their press releases are at <https://www.buckinghamshire.gov.uk/news/>

- Book your free NHS Health Check - Bucks residents aged between 40 and 74, are being encouraged to book a free NHS Health Check at their GP surgery. Note the list of exclusions - e.g. not on statins.

<https://www.buckinghamshire.gov.uk/news/book-your-free-nhs-health-check/>
<https://www.buckinghamshire.gov.uk/campaign/nhs-health-check/>

- You've missed the last chance to have your say on Buckinghamshire Council's spending priorities. Don't winge if you didn't comment. Do winge if they ignored you!
<https://www.buckinghamshire.gov.uk/news/last-chance-to-have-your-say-on-buckinghamshire-councils-spending-priorities/>

- Polling arrangements, Buckinghamshire Council has launched a consultation asking residents for feedback on polling districts and polling places across the county., Comment by by 11:59pm on 4 December 2023
<https://www.buckinghamshire.gov.uk/news/>

[have-your-say-on-buckinghamshire-polling-arrangements/](https://www.buckinghamshire.gov.uk/news/have-your-say-on-buckinghamshire-polling-arrangements/)

Utility roadworks. Buckinghamshire Council has written to every utility company that operates in the county with a clear reminder of their obligations when they want to carry out roadworks.

<https://www.buckinghamshire.gov.uk/news/buckinghamshire-council-announces-zero-tolerance-approach-to-utility-works/>

North West Chilterns

Community Board

If you join your community board, you'll be able to have your say on issues that affect your area. How involved you become is up to you. You can attend our board meetings and events, have an opportunity to get involved with the working groups, receive notices about local consultations and funding opportunities.

To find out more about your local community board, see <https://www.buckinghamshire.gov.uk/community-and-safety/improving-your-local-community/north-west-chilterns-community-board/> or contact the board at northwestchilterns@buckinghamshire.gov.uk.



tk plumbing and electrics

Tom Kehoe

For all your plumbing and electrical needs.

City & Guilds qualified.

No job too small.

All work guaranteed.

References can be supplied on request.

Contact Tom on:

phone: 01494 580 518

mob: 07716 440 916

email: tk_plumbingandelectrics@hotmail.co.uk

MIDWAY CHIMNEY LINERS & SWEEPS



Chimney Lining Specialists
Chimney Sweeps
Member of HETAS
Repointing – Pots Replaced
Cowls & Terminals Fitted
Certificates Issued

01494 564321

07850 196616

Fyfields, Valley Rd, Hughenden Valley



647963

SLC Plumbing & Heating

Contact: Stuart Collins

Mob: 07789 690611

Reliable, experienced local engineer

Boiler servicing/repair/replacement

Gas Safety / Landlord certificates

Radiator Power Flushing service

'Gas Safe' Certified - Fully Insured





NEW PLAYERS WELCOME
NEW VOLUNTEERS WELCOME
FOR THE 2023/4 SEASON
JOIN A WINNING TEAM
HUGHENDEN VALLEY FOOTBALL CLUB
FA QUALIFIED COACHES

SIGN UP & CONTACT US
AT HVFC.CO.UK



National Trust Christmas Events

A selection of events near to HV from the NT.

As a rule, grounds are open 10am-4pm, houses may open later, and some places are only open on certain days so do check websites before travelling.

Hughenden, nr High Wycombe, Buckinghamshire

‘12 days of Christmas’

Monday 20th November – Monday 1st January

Hughenden’s 12 days of Christmas is back, along with separate festive creative workshops for adults to create a watercolour Christmas card and for families to make their own Christmas crackers. For children there is a festive trail in the garden to search for the 12 presents of Hughenden, and storytelling in the second-hand bookshop.
nationaltrust.org.uk/hughenden

Stowe Gardens, nr Buckingham

‘A Winter’s Tail’

Monday 18th November – Thursday 4th January

nationaltrust.org.uk/stowe-gardens

Basildon Park, nr Reading in Berkshire

‘The Wind in the Willows’

Monday 18th November – Friday 5th January

nationaltrust.org.uk/basildon-park

Greys Court, nr Henley-on-Thames, Oxfordshire

‘A Christmas Memory’

Saturday 25th November – Thursday 5th January

nationaltrust.org.uk/greys-court

Waddesdon, nr Aylesbury, Buckinghamshire

‘Christmas at Waddesdon’

Wednesday 22nd November – Monday 1st January

nationaltrust.org.uk/Waddesdon

Chastleton, nr Stow-on-the-Wold, Oxfordshire

‘A 1960s Christmas’

Wednesday 29th November – Sunday 17th December (Wednesdays to Sundays)

nationaltrust.org.uk/Chastleton

Nuffield Place, nr Henley-on-Thames, Oxfordshire

‘Driving home for Christmas’

Saturdays and Sundays 2nd – 17th December, then 20th – 23rd and 27th – 31st December 11am-4pm

nationaltrust.org.uk/nuffield-place

Claydon, nr Buckingham

Candlelight Christmas tours

Saturdays and Sundays from 25th November to 17th December, tours at 11am and 1.30pm

nationaltrust.org.uk/claydon

New Physio Business Arrives In the Valley

NSR Physiotherapy

We are pleased to introduce a new business to the Valley in the form of NSR Physiotherapy, who are based in the Deeter building along Valley Road. As the name implies, physio is their speciality and their central location in the community will surely be welcomed by those previously having to travel for treatment.

Naomi Sterio and Sophie Rodley head up the team. Both have approaching twenty years' experience working as physios working in the NHS, private, military and sports sectors. They offer assessment and treatment of a wide range of musculoskeletal injuries as well as chronic conditions and are happy seeing all age groups. Naomi grew up in Naphill and later lived in the Valley for five years.

Both also work at The Abbey Clinic in Bisham and bring with them a passion for providing patient focussed care to enhance the health and well-being of their patients. They emphasise the importance of physio in our lives and with the NHS under strain and providing limited access to physio, see NSR Physiotherapy as filling a significant

gap. Access to NSR Physiotherapy is primarily through self-referral via telephone or email (details shown below). They are also happy to receive referrals from GPs and consultants and are registered with the main insurance companies. Enquiries and questions are welcomed. NSR Physiotherapy can be contacted at:

Deeter House, Valley Road,
Hughenden Valley, High Wycombe,
HP14 4LW

Tel: 078687 88812

Email: info@nsrphysiotherapy.co.uk

Web: www.nsrphysiotherapy.co.uk



The Grange

Restaurant



Book your Christmas Party at The Grange

Celebrate the festive season with family, friends, colleagues and dogs. Pre-book your Christmas Party at The Grange in Saunderton with our fabulous 3-course set Festive Menu for £39.95 per person.

Available 27 November to 30 December 2023

Or enjoy a warm welcome for breakfast, brunch, festive lunch or Afternoon Tea every day from 9am-4pm. Please book your table online. Dogs are welcome too!

thegrangesaunderton.org.uk/christmas

Your visit supports our charity Hearing Dogs for Deaf People
help deaf people leave loneliness behind.

Registered charity in England and Wales no. 293358 and in Scotland no. SC040486 • Royal Patron HRH The Princess Royal

Neighbourhood Watch

Benefits of joining Neighbourhood Watch

Be protected, be connected, be part of Neighbourhood Watch!

In today's fast-paced world, where technology has made it easier to connect with people across the globe, it is paradoxically becoming increasingly common for individuals to feel disconnected from those who live closest to them—their neighbours. While online resources on crime prevention exist, nothing can replace the value of knowing your neighbours and actively working together to create a safe and supportive environment.

A NW scheme is proven to reduce crimes such as burglaries, vandalism, cons, scams, and car crime. So, if there is no scheme in your road, why not volunteer to be a NW Coordinator and help to protect your home and community? It might take just a couple of hours per month, but it could make a real difference to you and your neighbours.

What can a scheme Coordinator do?

Distribute (usually by email) the Thames Valley Alert messages – these email bulletins from the police report on crimes, crime threats, forewarn of known scams, and they are an invaluable way of keeping abreast of issues. By establishing a

communication network among neighbours, it becomes easier to share information about suspicious activities, warn others of potential dangers and engage in open dialogue with the neighbourhood policing teams regarding any specific concerns that you and your neighbours may have.

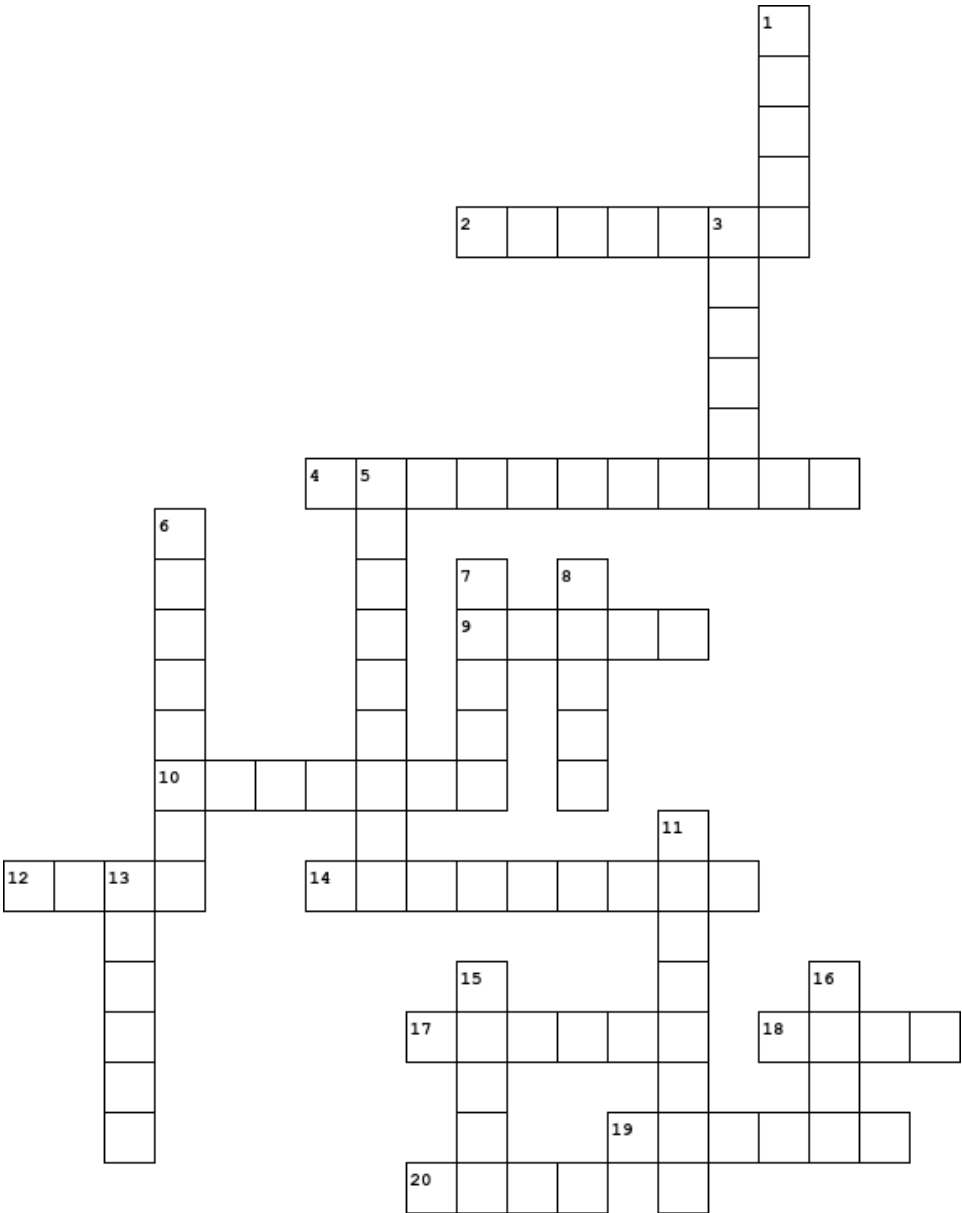
Advise households on simple security measures such as property markings, how to deal with cybercrime, car crime, bogus callers, and rogue traders – NW and Thames Valley Police website have lots of information on all of this.

Encourage neighbours to report any suspicious activity to the police, either by calling 999 if a crime is taking place, or 101 for non-emergency calls

Reducing loneliness and isolation. These emotions can leave vulnerable individuals, especially the elderly, more susceptible to falling victim to scams. The prospect of making conversation with another person can make them more willing to open the door to a stranger, or engage in a phone conversation with an unknown caller, or respond to emails or letters.

Neighbours by chance. Working together by choice.

Junior Crossword



Crossword Clues

Across

2. Bringing in of the crops
4. Used to collect leaves
9. Fruit of the oak tree
10. Birds leave to escape for the winter
12. Also known as maize
14. Not green forever
17. Autumn seed used for playing games
18. O'Lantern
19. Name for a baby hedgehog
20. The American name for Autumn

Down

1. Good hot and buttered
3. Hope you're not afraid of their legs!
5. When animals go to sleep for the winter
6. Brown spice used to flavour cakes and biscuits
7. A tree and a syrup
8. Time to put them on with thick socks
11. Edible funghi
13. Autumn shade of red
15. Chocolatey drink to keep you warm
16. Used to tidy up leaves

UK GARAGE OF THE YEAR WINNERS 2023, 2022, 2021 & 2018

Your Award Winning – Local – Independent Garage in Downley

50% OFF YOUR MOT WHEN BOOKED WITH A SERVICE
THIS ADVERT IS YOUR DISCOUNT VOUCHER

**ALL VEHICLES WASHED
& SANITISED**

**We will Collect &
Deliver Your Car**



**VIDEO EVIDENCE OF
ALL WORK**

**Complimentary
Courtesy Cars**

MOT | Service | Electric & Hybrid | Tyres | Repairs



17 Littleworth Road, Downley, HP13 5XF

01494 444481

servicemanager@hillclimbgarage.co.uk

www.hillclimbgarage.co.uk

Est 1972

John Bishop Garden Machinery

SALES SERVICE & HIRE OF GARDEN MACHINERY
AGENTS FOR BRIGGS AND STRATTON
SPARES FOR VARIOUS MACHINES
OIL, STRIMMER-CORD, BELTS, CABLES, BLADES ETC.
free Collection and Delivery

Tel: 01494 563513

Mob: 07917 106004

E-mail: jonnybish@hotmail.com

*Piggotts Hill, Speen Road, Hughenden Valley,
High Wycombe, Bucks HP14 4NH*



JNP

Residential Sales

High Wycombe 01494 528000

jnp.co.uk

Instructions for Authors

Please follow these guidelines

DEADLINES

The schedule for the next edition is on the next page. It is not possible to guarantee that items received after the deadline will be included in an edition, unless a prior arrangement has been made with the team.

Remember that late copy delays the production of the magazine as we may miss our 'slot' with the printer. Thus late copy may not be accepted.

Articles can be a report of events, describe planned events, your views, club or society events, your hobbies, etc.

SENDING COPY

Please send copy in good time, in Word format as attachments to magazine@hughendenresidents.org. We can also handle .RTF or .ODT formats.

Images, photographs and artwork

Pictures and other images should be sent, either as .pdf files, without any hypertext, or as uncompressed .jpg files, attached to an email. Please always title them. **They should not be embedded within the copy itself**, but please provide some indication as to where they should be placed within the text. High-resolution images are preferred.

If you do not use a computer, don't worry, please phone the Secretary or other Officer to make arrangements.

Please contact our treasurer at treasurer@hughendenresidents.org for all advertising issues.

COPYRIGHT

The sender must ensure that full permission to publish images comes with each item. Do not offer copyrighted images for publication without permission from the owner. HVRA will hold you responsible for this.

REPRODUCTION OF IMAGES

The photographs published in this magazine must not be reproduced elsewhere, except with the express permission of the photographer via the Editorial Team.

There is, however, always a need for good/relevant pictures to illustrate the magazine or the website, so if you would like some of your photographs to be considered please get in touch (see email below).

Email address for submissions:
magazine@hughendenresidents.org

For your Diary

24th Nov	Christmas Carols and lights, Village Hall
25th Nov	Christmas Fair
8th Apr 2024	The Potter Quiz
29th June 2024	Hughenden Valley Summer Fete

Regular events

1 st Tuesday each month, 7.30p.m. (not Jan or Aug)	HVRA committee meetings, Small Hall
Last Friday each month (not Jun or Dec).	HAGA, Large Hall

Further afield

18th Nov 12.00 - 18.00	High Wycombe Christmas Festival (includes lights switch on) High Street
25th Nov 15.00 - 1800	Princes Risborough, High Street - Christmas Lights Switch on
26th - 27th Nov 11.00 - 16.00	The Grange, Saunderton, Christmas Market

Hughenden News - Publications Dates

Schedule for Spring Edition 2024

Fri 10th Feb	Principal deadline for Copy and Adverts
Fri 15th/ Sat 16th Mar	Delivery of Magazines to Residents

Schedule for Summer Edition 2024

Fri 14th Jun	Principal deadline for Copy and Adverts
Fri 13th/Sat 14th Jul	Delivery of Magazines to Residents

Schedule for Winter Edition 2024

Fri 18th Oct	Principal deadline for Copy and Adverts
Fri 22nd/ Sat 23rd Nov	Delivery of Magazines to Residents

Hughenden News is printed on FSC certified paper, using vegetable based ink and chemical free plate-making. Our printers recycle wherever possible.

HVRA Officers and Road Reps Spring 2023

Office	Officers	Phone
Chairman	Peter Spence	566173
Vice-Chairman	Andrew Capey	258724
Treasurer	Paul Woodford	562913
Secretary	Rosemary Hewitt	562752
Road	Road Rep	
Boss Lane	Lyn Hawkins	562850
Bryants Bottom (south)	Jill Armshaw	488407
Bryants Bottom (north)	Janet Howe	488569
Burnham Road	Andrew Capey	258724
Cherry Tree Close	Catherine Hinds	297474
Church Farm	Geoff Wicketts	07813818072
Coombe Gardens	Jerry Morley	
Coombe Lane	Angus & Janet Idle	563673
Cryers Hill (North)	Vacancy	
Cryers Hill (South Upper)	Vacancy	
Cryers Hill (South Lower)	Vacancy	
Fleet Close	Jane Boughton	562991
Friars Gardens (west/south)	Sue Grace	562575
Friars Gardens (north/east)	Julia Grant	565746
Frogmore Close	Vacancy	
Hampden Road		
Orchard Close	Peter Cannon	563228
South Maundin	Brenda Morris	564893
Trees Avenue	David Mynors	562004
Trees Road	Mary Wright	563281
Valley Road (south)	Paul Woodford	562913
Valley Road (mid)	Rosemary Hewitt	562752
Valley Road (north)	Nancy Pomfret	562117
Warrendene Road		
Wedgewood Drive	Jerry Morley	
Whitfield Road	Angus & Janet Idle	563673
Editorial Team	See Editorial	
Bucks Free Press contact	Janet Idle	563673
Webmaster	Andrew Capey	258724
Village Hall	Michael Sole	563516
Village Shop	Louise Jones	568653

HVRA Information

Banking details

HVRA moved from using HSBC to Lloyds Bank in 2023

Account Name: Hughenden Valley Residents Association
Sort Code: 30-99-55
Acct No: 25967260

Subscriptions £5 per year, per household
Due in May / June

Useful Contacts

Buckinghamshire Council

CLlr David Carroll david.carroll@buckinghamshire.gov.uk
CLlr Steve Broadbent steve.broadbent@buckinghamshire.gov.uk

Hughenden Parish Council

Clerk to the Council clerk@hughenden-pc.gov.uk
01494 715296

Councillors for Hughenden Valley Ward within Hughenden Parish Council

CLlr Simon Kearey simon.kearey@hughenden-pc.gov.uk
There are 3 vacancies If you are interested in becoming a Parish Councillor please contact the Clerk.

Regular Village Hall Users and Contacts

Pre-School	Jenny Ing 07990 968242
Spectrum Pilates	Emily Harwood 07803 123092
Strong Nation	Hayley Cole 07369 276468
Hughenden Art Group	Paul Cooper 07718 141025
Valley Players	Dave Collins 07876 575706
Village Hall Committee	Michael Sole 563516
Badminton	Carol Gilliam 562843
USA	Julia Shorthall 07470 046999
Hughenden Valley Residents Association	Peter Spence 566173
Shop Choir	Louise Hooper 07917 341397
Badminton	Elaine Veysey
Flower Arranging	Jan Collins 563890
Evolution Pilates	Karen Letham 07973 384817
Wycombe Photographic Society	Steve Smith 07973 252717
Water Colour Art	Jennifer Chalmers 531119
Bucks Adult Learning (Art)	Bucks Adult Learning 473795
Tai-chi	Pam Felix 440198
Slimming World	Kerry Brown 07887 567264
Zumba	Hayley Cole 07369 276468
Yoga	Vicky Roberts 07793 892144
HAGA Hughenden Allotments and Gardening Association	Andrew Flint 564 972
PiYo Bucks	Alison 07801 268303
Jazzercise	Marthese 01753 889746
Socatots	Dean 07545 148201
Pregnancy Yoga	Charyn Williams 07738 626569

For a full up to date list of ALL hall bookings please refer to the Village Hall Website to view their online calendar:
www.hughendenvillagehall.co.uk/booking-page/

Index of Advertisers

A Hollick Building Contractors	53
Applewoods Surveying	29
Ask Louise - Advertorial	50
Betsy Williams	8
Christmas Craft and Gift Fair	32
Fraser-Morgan School of Dancing	39
Hillclimb Garage	71
Hughenden Autos	80
Hughenden Valley Community Shop	15
Hughenden Valley FC	65
Huws Gray Buildbase	2
Jackson and Co. Eye Care	56
JNP Residential Sales	72
John Bishop Garden Machinery	72
Massage Matters	49
Midway Chimney Liners and Sweeps	63
PQA High Wycombe	18
Premium Plumbing and Heating	61
Refresh the Marketplace	37
Seymour Taylor Accountants	18
SJF Flooring	58
SLC Plumbing and Heating	63
Spicer Plastering Services	39
Stuart Gibbons Painting, Decorating and Carpentry	61
The Gate	79
The Grange	68
The Harrow	3
tk plumbing and electrics	63
Turners Electrics	49
Turville Printing Services	23
Valley Players present Robin Hood	51
Village Environmental Services	34

01494 488632 @thegatepub thegate.pub

WELCOME TO YOUR NEW LOCAL PUB



COME AND JOIN US AT *the Gate*
PUB & DINING

**DELICIOUS NEW MENU • KIDS PLAYGROUND • FUNCTION ROOM HIRE • DOG FRIENDLY
• LIVE EVENTS • CURRY CLUB**

THE GATE - PUB & DINING • BRYANTS BOTTOM ROAD • BRYANTS BOTTOM • HP16 0JS



- Service
- Repair
- M.O.T

Your **Local, Friendly, Family** run garage
(01494) **563344**



M.O.T Testing and Repairs



Servicing (all makes/models)

Exhausts, Brakes, Clutches

Advanced Diagnostics

Free Courtesy Cars & Free Collection/Delivery

Female Friendly Garage, Magazines, Tea & Coffee

Location:

Valley Road, Hughenden Valley, High Wycombe, Bucks, HP14 4LG

www.hughendenautos.co.uk