

# HUGHENDEN NEWS

INCLUDING BRYANTS BOTTOM, CRYERS HILL &  
HUGHENDEN VALLEY



SPRING 2022

[www.hughendenresidents.org](http://www.hughendenresidents.org)

Price £2.50 – Free with Membership

*Randem Photography*



## Your Local Home Improvement Centre


### Extending renovating or repairing your property

Can supply all the materials needed to complete your project

For the most competitive prices call, phone or email today

And speak to one of our experienced staff.

- \* Decorative materials and paint mixed while you wait
- \* Sawn and prepared softwood timbers
- \* Bricks blocks sand and cement
- \* Plywood and sheet materials
- \* Paving and landscaping
- \* Makita power tools
- \* Insulation products
- \* Plant Hire



HIREBASE

Visit our showroom for quality bathrooms

With prices to suit all budgets.



Deliveries made by our crane offload vehicles

Valley Road, Hughenden Valley. HP14 4LG [www.buildbase.co.uk](http://www.buildbase.co.uk)

Tel: 01494 565600 Fax: 01494 565601 Email: [wycombe@buildbase.co.uk](mailto:wycombe@buildbase.co.uk)



Karen and her friendly team welcome you to

## ***The Harrow***



Your local family and dog friendly pub, serving delicious food, real ales  
and a great selection of wines.

Dogs, muddy boots, hikers and bikers welcome.

Food served 7 days a week.

All day Saturday from 12 till 9pm and Sunday till 6pm.

Baby changing and full disabled facilities.

Functions catered for with private hire if required.



Warrendene Road, Hughenden Valley, HP14 4LX

01494 564105

[www.harrowhughenden.co.uk](http://www.harrowhughenden.co.uk)

Like us on Facebook/The-Harrow-Pub

Find us on Instagram @theharrowpub

# Contents

Contents (contd.)	5
Chairman's Welcome	6
Hughenden Valley Residents Association	7
Editorial	7
Foster's Life	10
A Message from Councillor David Carroll	11
Veteran recalls King George VI's final journey on the 70th anniversary of his death	12
Have Your Say	14
Hughenden Valley to Wycombe Cycle Way	14
Hugh'n'Den	15
Hughenden Valley's Rare Chalk Grassland	18
The Gate, Bryant's Bottom	21
HAGA's Allotment and Garden Plot	24
Hughenden Valley Climate Group	26
The Winter / Christmas Parcel Project	28
The Wizard of Oz	31
Hughenden Parish Council	35
Hughenden Neighbourhood Action Group (HNAG)	37
Village Shop News	38
The Queen's Platinum Jubilee	41
Rob Butler MP	43
HVRA Drainage Improvement Group (DIG)	44
Planning Report	48
Hughenden Good Companions	49



## Contents (contd.)

News from St Michael's	50
High Wycombe and District u3a	51
Storm Eunice	52
Valley Players Murder Mystery Evening	55
Heather Couper CBE	56
Covid-19 Vaccination Programme	58
Recent News from Buckinghamshire Council	60
Meet the Neighbours	62
Who were they?	64
Hughenden Adult Crossword Challenge	66
Hughenden News - Publications Dates	69
For your Diary	69
Instructions for Authors	70
Regular Village Hall Users & Contacts: Spring 2022	71
HVRA Officers and Road Reps Spring 2022	73
Index of Advertisers	74

## Chairman's Welcome

I am writing this at the end of February. The worst of Storm Eunice has just been and gone, the damage overall almost comparable to the Great Storm of 1987. This time the forecasters were spot on and thankfully there were fewer fatalities as a result. Sadly the felt on the main Village Hall roof was one of Eunice's victims. Once loosened by the wind the felt front and back was unceremoniously stripped off in seconds. The full story is covered later in this magazine.

The start of 2022 has seen a storm of another kind going on at Hughenden Parish Council. A number of elected and experienced councillors have resigned in a matter of days, leaving it inquorate. We hope by the time this magazine is published and with the assistance of Buckinghamshire Council (which is required to step in, in such situations) additional councillors will have been co-opted and the normal day to day business of the Parish Council can be resumed once more.

Covid continued in recent months to restrict normal activities so a Senior Citizens' event was not possible in 2021. So once again we gave Christmas Gift Bags to our senior neighbours. A very big thank you to everyone who made this possible, those who contributed their time and

those who contributed financially.

Much of the past month has been taken up with the Planning Application submitted by Country Supplies which became apparent on 20 January. Following the various discussions and meetings held in 2021, this development was extremely disappointing. A public meeting, convened by HVRA, was held on Sunday 23 January, since which time over 250 local residents have voiced their objections via the planning portal. Bucks Council should be in absolutely no doubt that the sacrifice of a glorious acre of the Chiltern Area of Outstanding Natural Beauty to put up a parking lot is not an acceptable solution to the excessive level of lorry traffic going through the village in general or the lorry parking in Warrendene Road in particular. The story is detailed in Rosemary Hewitt's planning update.

The magazine editorial team are again to be commended for the effort they put in to get each edition of The Hughenden News to the printer in time (no mean feat). We would still like to see more contributions from individual local residents. It can be a letter on a point of interest or a longer article, an opportunity to "Have your Say" in the local community.



This will be my final contribution as Chairman of HVRA. When I took up the post in 2020 I stipulated that it would only be for two years. I had previously served as Treasurer to HVRA so at the AGM in May 2022 it will be time for me to step down as an Officer. However I will continue as the Road Rep for Orchard Close and attend Executive Committee meetings.

Peter Cannon  
[chairman@hughendenresidents.org](mailto:chairman@hughendenresidents.org)

## Hughenden Valley Residents Association

A key feature of the HVRA is that we have representatives (Road Reps) on pretty much every road in the valley, and more than one on the longer roads. This means, for example, that we can cascade messages across the village very quickly.

Vacancies now exist for Road Reps in Bryants Bottom (South), Cryers Hill and Trees Road. The posts can be shared and provide a valuable resource in the three villages. You would become members of the Committee of HVRA.

If you are able to fill one of the above posts please contact our current Chairman on 01494 563228 or the Secretary on 01494 562752.

## Editorial

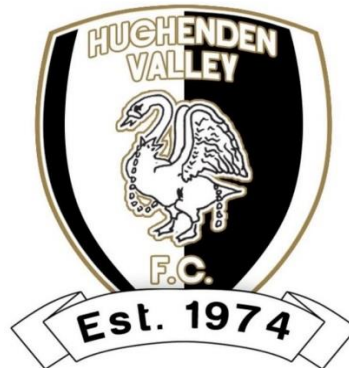
HVRA has been publishing its newsletter / magazine for over 30 years. Where we have back copies this forms an interesting historical record. We will be printing selected extracts - some things change, others don't. We are also grateful to the family of the late John Veysey for permission to publish extracts from his book "Hughenden Valley, from the Middle Ages to the end of the Second Millennium". We also include an article from the Royal Star and Garter, giving a slightly different take on the Jubilee celebrations.

We have profiled 2 local businesses in this issue. This is a continuing project to increase awareness among residents of what is going on in our patch and to help in a small way as Covid-19 grinds on.

We are always on the lookout for interesting articles and points-of-view, new issues, or new groups that are starting up.

Thank you to all contributors and the editorial team.

Cover Picture credit:  
Randem Photography  
<http://randemphotography.com/>



**HUGHENDEN VALLEY FOOTBALL CLUB  
ARE RECRUITING FOR MORE PLAYERS  
TO JOIN OUR**

**Under 7s, 8s, 9s, 10s and 12s**

**COACHES ARE DBS CERTIFIED & FA LEVEL 1 QUALIFIED**



We have a reputation for coaching our players to be as good as they can & helping them to enjoy every minute!

**WANT TO KNOW MORE?**

Please contact Dave Hilling, (HVFC Chairman) on 07985 811021, at [dhilling68@hotmail.com](mailto:dhilling68@hotmail.com), or at [HVFC.CO.UK](http://HVFC.CO.UK)

**TheFA  
Charter  
Standard.**



*We do only positive.* 😊





# Hughenden Valley Pre-School



Hughenden Village Hall, Coombe Lane, Hughenden Valley,  
Bucks, HP14 4NX

Where children from 1 year old learn  
through play.

We also have 2 - 4-Year-old Funded and  
Non-Funded places available.

For more information and availability  
please call Jenny

01494 563992 (Term Time)

07990 968242 Anytime

Email: [admin@hughendenpreschool.com](mailto:admin@hughendenpreschool.com)

## Foster's Life

My name is Foster. I am one of six but my siblings have all long since departed this life. I came into this world on the 4 of December 2019 at 11.31.26. I know this to be true as it has been printed on my bottom.

Home is tucked away in a dense hedge overlooking the 15 acre field. Me and my best friend TetraJack were abandoned here for reasons beyond my comprehension in 2021. Jack and I have been out in all weathers, enjoying watching the crops growing year after year and the beautiful starry nights. It used to be that one could see 7 or 8 flashing lights at night but we heard someone called Greta put paid to all that.

It is now 2061 and we had some excitement last night. A comet went over. Some voices we heard said it was called Halley. It only comes around once every 74 years so you would be lucky to see it twice in a lifetime.

Jack is failing fast. All the sun rain and wind has played havoc with his complexion. He has gone very pale. I fear he will have disappeared into dust before too long.

Me, I'm as bright as a button, still shiny, I haven't changed a bit since the day I was born and I will still be

here in 2135 but it will be a lonely existence. I am not sure I was ever meant to be left here.

So dear reader if you see anything like me on your travels take me home and as they used to say, let's all have a g'day.

Victor Harold

-ooOoo-

Harold may have a point!

Aluminium cans are a relatively new form of litter. It is thought that they will take between 200 and 500 years to degrade in land fill. Despite that aluminium cans in the round are thought to be environmentally friendly. The lifespan of the average can is 6 weeks between manufacture, consumption of the drink and recycling. On the down side many cans do have a film of plastic inside to help retain the liquid. The plastic does include BPA which stands for bisphenol A, a chemical which can cause brain damage. The internet does not say there is a direct link between the latter and the mindset of some of the can drinkers who feel the need to spoil our beautiful countryside by tossing their empty cans out of their car windows, but it does look like there is some correlation .

If you want to borrow litter collecting equipment please contact Elaine by email

[litterequip@hughendenresidents.org](mailto:litterequip@hughendenresidents.org)

Peter Cannon

## A Message from Councillor David Carroll

Dear Residents,

It's been a very hard and challenging time for us all but hopefully life will start to get back to some sort of normality.

So many people and community

groups have supported and helped each other through this testing time.

Please can I thank all the many residents who contact me on various issues which I always try resolve or point people in the right direction for help or advice which I have been doing for many years and help contribute towards our great community and area, alongside all the other very active community groups.

Regards,

David

[David.Carroll@buckinghamshire.gov.uk](mailto:David.Carroll@buckinghamshire.gov.uk)

## CRYERS HILL POST OFFICE & STORE

01494 712245



**FRESH FOOD • FRUIT & VEGETABLES • IN STORE BAKERY  
COSTA COFFEE TO GO • POST OFFICE • OFF LICENCE  
NATIONAL LOTTERY • DRY CLEANING  
CALOR GAS & CAMPING GAS**

OPENING HOURS: 7AM TO 7.30PM MONDAY TO SATURDAY  
8AM TO 5.30PM SUNDAY



**SUPPORT YOUR LOCAL POST OFFICE  
AND LONDIS STORE**



## Veteran recalls King George VI's final journey on the 70th anniversary of his death



# Royal Star & Garter

Care with courage

A former Grenadier Guard has recalled the role he played in the funeral of His Majesty King George VI, on the 70th anniversary of the monarch's funeral.

John Walmsley was a Sergeant in the King's Company stationed at Victoria Barracks in Windsor, and in charge of an escort detachment, when word came through that the King had died at his estate in Sandringham, on 6 February 1952.

The 95-year-old is now a resident at Royal Star & Garter's High Wycombe Home. The charity provides loving, compassionate care to veterans and their partners living with disability or dementia.

Aged 25, he accompanied the King's coffin from a train station at Windsor, to the castle, and into St George's Chapel, on the day of the funeral on 15 February 1952.

Looking back 70 years, John said: "In those days there were two stations in



John as a young Grenadier Guard

Windsor, and the train carrying the King came into the top station, near the castle. As soon as it arrived, I was there, as part of an escort which also included the Navy. We escorted the coffin, walking on either side of the gun carriage, all the way from the station into Windsor Castle itself and towards St George's Chapel, ready for its burial. I had 15 men on one side, 15 on the other and that was my little detachment."



But there were then tense moments when the coffin arrived at the chapel. “The steps to St George’s Chapel are very steep, and the coffin was lead lined, so the lads who were carrying it had to practise in advance with weights inside it, to make sure they were prepared,” said John. “The coffin was walked up the chapel steps by the four men on either side. These men were strong and strapping, but the coffin was very heavy, and as they walked up the steep steps, it sloped a lot, and the boys were struggling with it. So the Warrant Officer behind it had to push the back of the coffin, by just easing it forward, up with the boys. We also had to adjust our march to the shuffle of the men who were carrying it. When the coffin went into the Chapel that was the end of the responsibility for us.”

Remembering the day, John added: “It’s a strange feeling, especially with the public all around you, and you’re aware that you’re taking part in a moment of history. But when you’re serving, you’re on duty, and it’s all planned and timed.”

John joined the Grenadier Guards in 1944, and served until 1967, rising to the rank of Regimental Quartermaster Sergeant. He served in post-war Germany, Palestine and Malaya.



John is now a resident at Royal Star & Garter in High Wycombe

Her Majesty Queen Elizabeth II, who is Royal Star & Garter’s Patron, succeeded to the throne following her father’s death. John also took part in her Coronation ceremony, on 2 June 1953.

The Queen’s Platinum Jubilee celebrations are taking place this year, culminating in a four-day bank holiday at the beginning of June to mark her 70 years on the throne.

Picture credits: Royal Star and Garter

## Have Your Say

### Hughenden Valley to Wycombe Cycle Way

Who would like a safe cycle way from Hughenden Valley to High Wycombe?

Well, you're in luck. There is a *proposal* for a route, developed by Charles Brocklehurst, not just into High Wycombe but eventually all the way through to Abbey Barn. As a wider initiative that route will link to one from Abbey Barn to Bourne End and beyond.

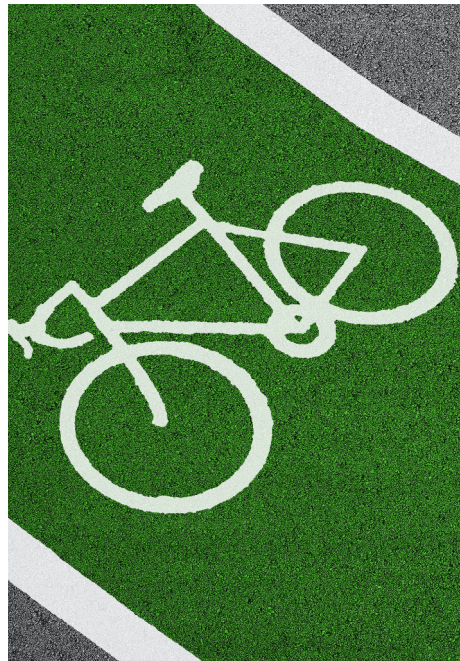
Like many things though, like the use of penicillin and not shoving children up chimneys, there are always a hundred reasons for not upsetting the apple-cart and making changes.

Happily, there are a number of good reasons why this plan should go ahead. Our Government has also issued (don't let that put you off) a document to encourage cycling *GearChange- a bold vision for cycling and walking*. It won't take long to skim through and will highlight some of the huge benefits of enabling people to get out of their cars and into the open air. This cycle way is part of a reworking of our national transport thinking and our approach to how we treat ourselves and our environment.

For example, it is now part of the Primary school curriculum to teach bikeability, which offers every child in England cycle training. Imagine how much more relaxed and jolly that training would be if it took place on a cycle way with no cars on it.

Both documents are available at <https://hughendenresidents.org/2022/02/27/cycle-path-in-the-valley/>

If you feel strongly enough about this issue, will you please tell Charles Brocklehurst (charles.brocklehurst@wycombe.gov.uk)?



The same goes for Rob Butler MP (rob.butler.mp@parliament.uk). Please also copy me into your email so that I can ask what progress is being made.

In short – If you want this to happen, as I do, we'll all have to do a little work.

If someone hadn't done something all those years ago, we'd still have lead in petrol, smoking on trains and

undernourished children in plenty.

(Thank you, Marcus Rashford for highlighting that one!)

Sam Morrison  
sam@shortyandco.com

Please note: Unattributed opinion pieces will not be published. The Editorial Team reserve the right to decide on what is published in this section and views expressed are not necessarily those of the Editorial team or HVRA.

-ooOOoo-

## Hugh'n'Den

The Government has encouraged us to exercise in gardens, parks and countryside but this does unfortunately result in muddy footpaths. We must bear this in mind and do our utmost to ensure we do not erode our footpaths. Vary your route so that the load is evenly dispersed, however follow the Country Code and do not stray from the footpath.

We would suggest that dog walkers should vary their routes, this would contribute to safeguarding the good condition of local footpaths, the walkers and their canine charges will benefit from variety of location and wildlife will be less disturbed. Also regarding managing your dog, a

recent research paper reviewed in New Scientist (12<sup>th</sup> February), looked at the chemical pollution of farmland or nature reserves due to dog poo. The authors suggest that it could upset the balance of the local flora and fauna.

There has been local concern that the solitude and beauty of the Chiltern Hills is being challenged by heavy goods vehicles containing truckloads of materials which increasingly travel along our country lanes. These lorries sometimes park in awkward places, blocking driveways or near school crossings. We are sure there must be Brownfield sites that Councils could re-purpose as lorry parks. This could potentially ensure that the green fields of Hughenden and its environs remain protected. [See the Planning Report also in this issue]

Ever wanted to sing  
**JUST FOR FUN?**

Then come along  
and join **HUGHENDEN  
COMMUNITY SINGERS!**

A new choir, Mondays 7.30 - 9.30pm. There is no need to be able to read music, or to have sung before, and there are no auditions. We will be singing a wide variety of music and plenty of refreshments will be provided.

Everyone is welcome, including under-18s with parents, and there are no fees. St Michael & All Angels has kindly lent us the church to practice in on Monday evenings. So the acoustics are great, and there is plenty of space to sing and park!

To get more information,  
or sign-up, contact Liz  
on 07768 790029 or  
email [evmoseley@  
btinternet.com](mailto:evmoseley@btinternet.com)





# VILLAGE ENVIRONMENTAL SERVICES DOMESTIC DRAIN SERVICES

Proprietor: Dennis Cook  
Est. 1979

**24/7  
CALLOUT  
SERVICE**

# BLOCKED DRAINS?

# CALL US DAY OR NIGHT

**FAMILY RUN BUSINESS SINCE 1979**

**BLOCKED DRAINS CLEARED • REASONABLE RATES**

**NO EXTRA CHARGE FOR EVENING, WEEKEND  
OR BANK HOLIDAY CALLOUTS**

**CCTV DRAIN SURVEYS**

**FULL PUBLIC LIABILITY INSURANCE**



**07850 635 844**  
**01296 624 221 (MESSAGES)**



# Hughenden Valley's Rare Chalk Grassland

## Local Wildlife Site

Our efforts since reporting in the last Hughenden News have concentrated on grass cutting and clearing - the most important job we have in the late summer/early autumn. We are few in number and have little in the way of machinery but thanks to the Group's dedication and a helpfully dry autumn we managed it. This was all the more surprising since covid lockdowns had prevented us carrying out the task at all during the previous year, meaning that we effectively had two years' worth of bramble, dogwood and tussocky grass to deal with. After three grass cuts, clearance of undergrowth/scrub and much raking, we had, by early January, got to a stage close to where our management plan suggested we should be in a normal year.

One piece of good news for us is that in future we may have access to mechanised help for the autumn grass cutting- to do in a couple of days what has taken our volunteer group on its own nearly four months. We will keep our fingers crossed that this does happen.

One of the benefits of our cutting and clearing is that we have a couple of areas prepared in readiness to do

some traditional hedge laying. We will use materials harvested exclusively from the site and with expert help and guidance from one of our members we will be able to create sustainable, hardy and locality-sympathetic stretches of hedging. I am not the only one in the group who finds this a particularly satisfying activity and look forward to beginning in the next few weeks.

Not simply a sign of spring but also a result of our clearance effort is that we have already had the benefit of snowdrops bursting through on the fringes of the banking above the football pitch, not generally seen when the ground is effectively choked with bramble and nettles from earlier in the year. We hope, for everyone's benefit, that we will be further rewarded with glorious drifts of wildflowers, especially the cowslips, wild rose, honeysuckle and, above all, our exceptional orchids (three species if we are really lucky!).

Not particularly evident at the moment – in the middle of winter – but we will soon be seeing the variety of invertebrate life which accompanies leaf-break and the flowering season. Whilst not wishing

to pre-empt the results of the survey carried out by the Bucks Invertebrate Group last August, we are confident that the chalk bank will not only confirm its diversity of invertebrates, but we are more than hopeful that the Group will have identified some surprises and even rare specimens to add to our knowledge.

The chalk bank – the focus of the Conservation Group’s effort – is of course part of the Village Hall’s “estate” and is accessible and open to

all. The banking is one of the jewels that go to make this area of the Chilterns so famous and deserving of its AONB status and we hope to spread the word about it and make it more frequently visited. Enjoy with us the beauty that is on our doorstep whilst also remembering that it is a rare and fragile environment, please therefore help us guard it for the future.

Your Village Hall Chalk Bank  
Conservation Team

Winter View from the Chalk Bank



## Painting, Decorating and Carpentry **Stuart Gibbons**

SC Gibbons  
Challock  
Valley Road  
Hughenden Valley  
HP14 4PP

Tel: 01494 563257  
Mob: 07876 155747  
Email: [scgibbons@hotmail.co.uk](mailto:scgibbons@hotmail.co.uk)



## SLC Plumbing & Heating

Contact: **Stuart Collins**

Mob: **07789 690611**

Reliable, experienced local engineer

Boiler servicing/repair/replacement

Gas Safety / Landlord certificates

Radiator Power Flushing service

'Gas Safe' Certified - Fully Insured

# PREMIUM Plumbing and Heating

Specialists in Plumbing,  
Heating & Bathroom Installations

Tel: **01494 256175**  
Or: **01844 346946**  
Michael: **07737 007809**  
Glynn: **07834 734491**

[info@premiumplumbingandheating.co.uk](mailto:info@premiumplumbingandheating.co.uk)

[www.premiumplumbingandheating.co.uk](http://www.premiumplumbingandheating.co.uk)





## The Gate, Bryant's Bottom

Nestled within the Parish of Hughenden is the small hamlet of Bryants Bottom and tucked even further into this heavily wooded landscape is The Gate - a gem of a pub dating back to 1864. After many reincarnations, The Gate was taken over by Ruby and Sham Balrai at the end of September 2021, after the final lockdown but just before Omicron was about to take hold.

Sham and Ruby knew they were taking a big leap of faith investing in a pub at this point, particularly after the knock that hospitality has taken over the last two years. However, Sham had always hankered after a pub of his own despite Ruby's reservations having seen the hard work involved when her father ran pubs in the East End of London back in the 1990's. Ruby had been steeped

in the world of accountancy for all of her working life and Sham still runs his own photography and videography business but when The Gate came up for sale, both jumped at the opportunity.

The new owners have sensed a need to preserve the pub and made very few changes. As soon as I walked in, it became clear that the clientele was made up of locals who had come in for a pint and a chat with their friends after a long day. However, the new landlords want to open The Gate up to as many new punters as they can, be it ramblers at the weekend, seniors during the day or simply to those who thought the pub had closed and never reopened after Covid hit. This started with a big bang in 2021 on Bonfire Night when over 250 guests attended their firework



display and enjoyed a BBQ and outdoor bar. More events are planned for 2022 including live music, Jubilee celebrations, curry club and even an event to celebrate International Women's Day which will see local children invited to write an article celebrating someone that they know with cake, tea and coffee. Ruby and Sham have their finger on the pulse of the community they are part of and clearly feel that The Gate can be so much more than just for the occasional evening drink.

As well as two playgrounds, plenty of outdoor space is available to seat approximately 250/300 - something that the new owners plan to utilise when they refurbish the pub's barn for events and weddings. Having been taken on a short walk around

The Gate by manager Hannah West, you get a sense of how old and vast it is. We look at the newly discovered well at the front of the pub, fenced off for safety reasons, walk through the kitchen and then on into the function room filled with images from when High Wycombe was a beautiful tree-lined market town over a century ago. It's still a process of discovering The Gate's hidden treasures, however be warned, Ruby and Hannah plan to relocate two stuffed foxes from the front of the pub to guard over the gent's toilets!

One of the things that the new landlords firmly believed needed changing was the menu at The Gate. They stand by traditional pub food but want to ensure that absolutely everything on the menu is freshly




cooked and of a standard that they are willing to feed their own children and eat themselves. Gastro fayre as well as options for vegetarian, vegan and gluten free diets sit alongside the usual favourites so that there is something for everyone. I spoke to head chef, Ben Mills who has worked alongside Raymond Blanc and quietly goes about the business of creating fabulous food from fresh ingredients. He clearly enjoys cooking (on his days off, he's straight home to cook for his parents) as well as being a part of The Gate family.

This is perhaps the stand out memory of my evening interviewing Sham and Ruby - the sense that this new

incarnation of The Gate places great importance on family and friends - be they the old clientele who have always popped in for a pint and something to eat or the new - encouraged by a fresh website and modern menu. Staff here are clearly relaxed and happy - Ruby likes to refer to them as her 'new extended family' and this shows both behind the bar and at front of house. Good luck to The Gate, Sham and Ruby have gone a long way towards making this a really special pub to visit for all of us.

Sarah Mustapha

For more information, call 01494 488632 or see [www.thegate.pub](http://www.thegate.pub)



**tk plumbing and electrics**

**Tom Kehoe**

**For all your plumbing and electrical needs.  
City & Guilds qualified.  
No job too small.  
All work guaranteed.  
References can be supplied on request.  
Contact Tom on:**

phone: 01494 580 518  
mob: 07716 440 916  
email: [tk\\_plumbingandelectrics@hotmail.co.uk](mailto:tk_plumbingandelectrics@hotmail.co.uk)

## HAGA's Allotment and Garden Plot

Hello Plotters,

### OF JAZZBIRDS, STRELITZIA AND WINTER AVOCADOS

Here we are in mid-February; Six Nations rugby, Winter Olympics, plus some sort of round-ball knockout competition also underway apparently, and the garden is waking up. I say "waking up" but in many respects it has seemingly only been in a fitful doze: many plants have remained in leaf for too long, have not had much of a cold snap and are already starting to bud. Some I think will have not had enough water over late autumn and winter: it will be interesting to see how well my quince, camelia and azaleas will fare considering they like plenty of late season moisture to form the next spring's buds.

Meanwhile, in the parallel universe of my greenhouse continues its own weird course. With only minimal bottom heat to keep away real sub-zero temperatures, I have not only got my orange tree with maturing fruit, growing buds and developing flowers all at once (as only citrus trees seem to manage), but I also have a strelitzia holding its own (not budding but at least growing new leaves) and two avocado plants. The

latter I only planted the fruit stones for the hell of it and not expecting them to survive the winter, yet they are still growing strong. I suppose fruit will be too much to hope for.

The bird world is playing its normal tricks.....as in previous years they all took cynical delight in having a few days away over the weekend of the Great Garden Birdwatch. I don't know how they manage it, but they are all back now, with even more companions – I'm sure they would be blowing raspberries if they were able. But it's nice to see the usual suspects .... Merle and Oberon (the jazz blackbirds. Nice!), great and blue tits, goldfinches, lots of house sparrows (seemingly a come-back success), the Fifth-columnist jackdaws.... etc etc. Sadly, the noticeable absentees are the green finches, chaffinches and dunnocks. The latter seem to have declined as the sparrows have increased.

### The HAGA programme:

Despite early fears that Omicron covid would throw a new spanner into the works we were able to continue into the new year with our first scheduled meeting (and talk by an old favourite Tom Way).



Our programme continues with February's meeting and talk. On 25th March, it is the AGM – all are welcome to attend, both existing members and those wishing to join. Refreshments are available after the AGM formalities.

Anyone wishing to put themselves forward to stand on the committee please let Daphne Hicks know before the night of the AGM.

Prospective new members please note that annual membership is again being held at the pre-lockdown level of £10. This remains the best value membership of any of the local associations. Remember, you are also entitled to discounts at Hildreth's Garden Centre, Peterley Manor Farm, Prestwood (gardening section only),



Buildbase, Hughenden Valley, and  
Dobies Seeds and gardening supplies.

Dig it.

Andrew Flint  
Chairman  
Tel: 564 972

Daphne Hicks  
Social Secretary  
Tel: 562 170

Who owned Hughenden Valley 1,000 years ago?

***Bishop Odo, the Bishop of Bayeux and Lord of the Manor of Hughenden, commissioned the famous Bayeux Tapestry. As William the Conqueror had given Odo, his brother, 431 other manors as well, it is extremely doubtful that he ever visited Hughenden.***

'Hughenden Valley', by John Veysey





### **The Mindful Gardener**

We made it through January, temperatures are on the rise and planting season is almost upon us. The Hughenden Valley Climate Group have put together a few thoughts on how all of us can make a difference to the way we think about our gardens this year.

**Bee Friendly:** Include as many bee friendly plants as you can in your garden: lavender, catmint, sage, fennel, hollyhocks, anemones, geraniums, borage - the list is endless! If you want to get really busy on behalf of the bees, ask the government to do their bit by telling them not to lift the ban on bee killing pesticides:

[www.action.greenpeace.org.uk](http://www.action.greenpeace.org.uk)

Hold back from tidying your garden too early and wait for temperatures to rise. Cutting back and clearing disturbs those insects still sheltering from Winter. Most Bumblebee Queens nest just below the ground or under piles of brush until Spring

when they emerge.

Permaculture is the development of agricultural ecosystems so that they are self-sufficient and sustainable. In terms of our own gardens, this can simply mean collecting rainwater or home composting but can also include using green manure (fast growing plants that are used to cover and protect bare soil and then tilled back in to enrich it) or discouraging insects without using chemicals: “you don’t have a snail problem - you have a duck deficiency!”

Alfalfa, buckwheat, fenugreek and mustard greens are some of the many green manures out there and companion planting can also help with insect problems (you really don’t need to buy a duck!)

No dig gardening has been talked about for some time now and has really begun to gain attention in the gardening world. Our soil is full of beneficial microbes and organisms, in turn providing plants with nutrients and promoting water retention. Soil

health is at the heart of a great garden and a better planet. Further resources include Charles Dowding's website: [charlesdowding.co.uk](http://charlesdowding.co.uk), Anna Greenland: [annagreenland.co.uk](http://annagreenland.co.uk) and Huw Richards on YouTube.

Finally, please consider supporting the Climate Group's seed swap in Spring and look out for further details on our Facebook page. We have been collecting and saving seeds over late Summer and early Autumn of 2021 to share. If you happen to have any to donate, please do get in touch

via Facebook, particularly if you have more than you need from a packet you buy for this year's planting.

Happy Gardening Everyone! From all of us at Hughenden Climate Group

Please feel free to contact us via Facebook if you would like to come along!

Angie Kraft  
Sarah Mustapha  
Hughenden Valley Climate Group

*Est 1972*

**John Bishop Garden Machinery**  
SALES SERVICE & HIRE OF GARDEN MACHINERY  
AGENTS FOR BRIGGS AND STRATTON  
SPARES FOR VARIOUS MACHINES  
OIL, STRIMMER-CORD, BELTS, CABLES, BLADES ETC.  
free Collection and Delivery

**Tel: 01494 563513**  
**Mob: 07917 106004**  
**E-mail: [jonnybish@hotmail.com](mailto:jonnybish@hotmail.com)**

*Piggotts Hill, Speen Road, Hughenden Valley,  
High Wycombe, Bucks HP14 4NH*



## The Winter / Christmas Parcel Project

Once again, the HVRA was not able to hold its annual Party for our senior citizens and instead I undertook a massive buying spree for Christmas goodies, sufficient to fill 27 bags for couples and 41 bags for those living on their own.

My team of helpers arrived at the Small Hall promptly at 9.30 on

Sunday morning, 12th December. Eight dozen boxes of mince pies, assorted biscuits, shortbread, panettone, jars of marmalade, Lebkuchen chocolates in ribboned bags, savoury biscuits, a selection of cheese truckles, jars of chutney and hundreds of clementines were piled high, and everyone worked in unison to pack the bags. Despite Nancy

Pomfret sustaining a nasty injury to her shoulder after a heavy fall at The Harrow, she still managed to finish making her wonderful marmalade. Thank you, Nancy, you are a star!

Good teamwork enabled all the bags to be filled in what seemed like no time



The Hughenden Packers

at all, and then the final touches were made as they were tied with a red or green ribbon to denote whether it was for one person or two. It was an amazing sight to see all the bags lined up ready for distribution either that afternoon or the following day.

I should like to say a big “thank you” to Becky, Elaine, Carolyn, Janet, Andrew and Helen who filled the bags, Nancy for soldiering on, and Peter and Louise for joining us too and contacting local businesses for donations, and also to all the Road Reps who delivered the Christmas Gift Bags. It was a great team effort, very worthwhile, and we all appreciated receiving so many lovely

“Thank You” cards, letters and telephone calls from some very happy residents.

A note of grateful thanks go to the following local business that contributed enormously towards the cost: : Betsy Williams £200, and £100 each from Chiltern Car Sales, Turville Printing Services, the Village Hall and Kingsleigh, as well as some gifts in kind from Morrisons, Kado of Princes Risborough and the Christmassy bags from the Village Store & Coffee Shop.

Rosemary Hewitt  
Event Organiser



**SPICER**  
PLASTERING SERVICES

All types of internal and external plastering undertaken including:

- Artex ceilings re-plastered to a smooth finish
- Damp problems rectified
- Rooms re-skimmed

**Over 30 years experience**

**Fully insured**

For a **free** quotation or advice contact



**Ian Spicer 01494 562958**  
or **07973 553960**  
e-mail [i.spicer288@btinternet.com](mailto:i.spicer288@btinternet.com)



**MIDWAY**  
**CHIMNEY**  
**LINERS**  
**& SWEEPS**

**Chimney Lining Specialists**  
**Chimney Sweeps**  
**Member of HETAS**  
**Repointing – Pots Replaced**  
**Cowls & Terminals Fitted**  
**Certificates Issued**

**01494 564321**  
**07850 196616**

Fyfields, Valley Rd, Hughenden Valley

## **CAN YOU HELP?**



**Morning Delivery Assistants,  
Setting-Up or Closing-Down  
Helpers, and Daytime In-Store  
Volunteer Team Members  
Urgently Required**

***It's fun, sociable, and great  
for that happy feeling!***

Plus 10% staff discount and free drinks  
on shift. All holiday and swaps granted!

Why not do it together? - Couples  
and friends welcome.

No experience necessary and all  
training given. All shop volunteers  
work with a supervisor or other  
experienced team member.

***Please call Louise Jones on  
07909 527990 for an informal chat.***

HVRA's fund-raising habit goes back  
many years

*The Residents Association also held a  
second quiz in the back half of the  
year using the proceeds to help fund  
the Senior Citizens' party.*

*We also helped out at Village Day,  
running a Bucks Fizz stall, which  
undoubtedly would have made a  
bigger profit if we hadn't chosen the  
wettest day of summer to hold it on.*

Chairman's report, Newsletter for  
Hughenden Residents Association,  
Spring 1996



# The Wizard of Oz

## Presented by Valley Players, Hughenden

Valley Players were delighted to play to sell-out audiences for The Wizard of Oz in December. We know that the village Panto gets everyone buzzing before Christmas.

You enjoyed it, and so did we, but how does it get to the stage?

Planning! Plus a little bit of good luck and magic.

Around June script selection starts. This will involve trawling through the many offerings of play-publishers to find titles which appeal, which will fit on our stage, which have a good

story, give entertainment potential but most importantly which we have the cast to put on!

Then a short list will be read and a decision made. But first who wants to direct the Panto? The “boss” will have to organise and delegate a myriad of tasks, costumes, props, music, front of house, publicity etc. The person responsible will probably also be performing.

The Players will be invited to an informal reading of the chosen title and after this casting will occur and rehearsals scheduled from





September giving us approximately 12 weeks until curtain up.

As we are all amateur (the word means “for the love of it”) there are many times when a full cast is not available for a rehearsal which means someone reading in. However the real task is to learn your lines as true acting can’t happen with your script in your hand.

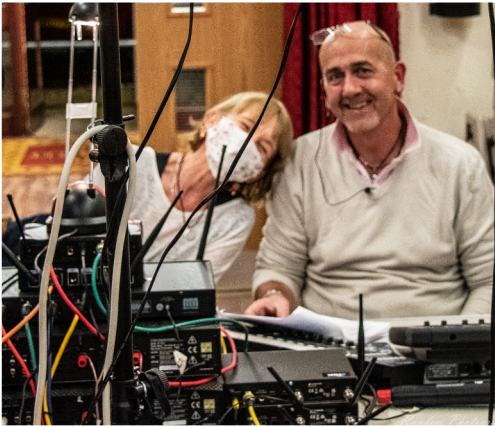
Costumes need to be bright and cheerful as Panto is lighthearted and very visual. This year we hired costumes for: Dorothy, Lion, Scarecrow, Tin man and Palace guard, from a specialist in Banbury where there is an Aladdin’s cave of costumes

for many different shows! The others are made or bought (to be used again). Scenery and props have to be made and painted. Don’t forget all the technical planning for lights, sound and special effects.

Having live music adds another dimension to rehearsals and the show, especially as many of us have no musical background other than singing in the shower!

So does having youngsters acting with us, as we have to licence their presence with Buckinghamshire Council and they have to be chaperoned by a registered chaperone.





As the weeks count down we move from a weekly rehearsal to two and three times a week, to every night for the week before curtain-up.

Then after much sweat and tears (?) performance week arrives and the nerves jangle for the dress rehearsal. There is a common thought in the theatre, “bad dress, great first night” it doesn’t always go like that.

Finally we are there, in the spotlights, with an audience roaring us on and joining in. Oh yes they are!

And then after all the hard work and the “buzz”, the final curtain.

All over..... until next year.

Andrew Pitman  
Chair, Valley Players



Chartered Building Surveyor  
based in  
Hughenden Valley



**HOUSE EXTENSION DESIGN  
PLANNING & DETAILED DRAWINGS  
PARTY WALL**



For further information contact  
**Jason Wood** BSc (Hons) MRICS MFPWS  
tel: 01494 562547; mobile: 07791 503607  
email: [jason@applewoods-surveying.co.uk](mailto:jason@applewoods-surveying.co.uk)  
[www.applewoods-surveying.co.uk](http://www.applewoods-surveying.co.uk)





On 1st February 2022, Hughenden Parish Council became inquorate. The parish council acknowledges that this is a cause for concern across the parish. This situation has never happened before to Hughenden Parish Council, as far as anyone knows, and it is unusual for a parish council to become inquorate but not unknown.

The Council should have 15 councillors and it has a quorum of 5. Over the last few weeks, a number of councillors have resigned and now only 2 remain. These are Cllrs Linda Derrick and Simon Kearey. At the time of going to press, the Council is inquorate, so it is unable to meet and take decisions and all its committees and working groups are suspended.

In these situations, Buckinghamshire Council (BC) has powers under S91 of the Local Government Act to appoint sufficient councillors to make the Council quorate. In line with its procedures, BC is in the process of appointing David Carroll, Steve Broadbent, and Clive Harriss, who are BC councillors for the Bucks ward of Ridgeway East, to Hughenden Parish Council.

This will bring the number of councillors on HPC to 5 and HPC will be quorate. BC is arranging for the Council to meet on 8 March, further details will be announced, and members of the public will be welcome to attend this meeting.

Once the Council is quorate and can meet, it can then co-opt residents onto the Council. To date seven residents have applied to be councillors and are waiting to be co-opted. Once new councillors are co-opted, then the BC councillors can step down so as long as the parish council has 5 councillors.

HPC is unable to release the names of the applicants at this point, residents will know details on 8th March.

Any resident can apply to become a councillor and even if all seven applicants are co-opted, there would still be six vacancies. Applications can be obtained from Helen Hogan, the Acting Clerk at HPC, [clerk@hughenden-pc.gov.uk](mailto:clerk@hughenden-pc.gov.uk).

Please see [www.hughenden-pc.gov.uk/council-info/role-of-councillor/](http://www.hughenden-pc.gov.uk/council-info/role-of-councillor/) for more information on about the councillor role. If anyone is



thinking of applying, they might like to go to the meeting on 8th March and see what the Council is like and talk to the parish councillors – both existing and newly co-opted. This meeting would also be an opportunity for residents to see and talk to Buckinghamshire councillors who represent our parish.

Every meeting of HPC has a session for public participation where anyone can comment or ask questions about anything on the agenda. The session only lasts 15 minutes and each person has a limited time to speak.

The dates of parish council meetings are announced on the website.

[www.hughenden-pc.gov.uk](http://www.hughenden-pc.gov.uk)

Helen Hogan  
Acting Clerk to Hughenden Parish  
Council  
clerk@hughenden-pc.gov.uk.

*In 1799, over a hundred years before the First World War, the Military Academy was situated in the High Street, High Wycombe, not far from where Lloyds Bank now stands. There was also a junior branch in Marlow. The Wycombe branch moved to Farnham and the Marlow branch to Sandhurst in 1813.*

*What is interesting, as far as Hughenden is concerned, is that the old maps show troops and cavalry set out on our hills and valley in defence of Pipers Corner.*

*'Hughenden Valley', John Veysey*



**turville**  
**PRINTING**  
SERVICES LLP

- Brochures • Leaflets • Letterheads
- Business Cards • Newsletters
- Compliment Slips • NCR forms
- Canvas Prints • Posters & More

*For all your printing & design requirements*

**Turville Printing Services LLP**  
Unit 2, 67 Verney Avenue,  
High Wycombe, Bucks. HP12 3ND  
info@turvilleprinting.co.uk

**01494 520322**  
[www.turvilleprinting.co.uk](http://www.turvilleprinting.co.uk)

## Hughenden Neighbourhood Action Group (HNAG)

After 15 years, the HNAG held its last meeting on 9th December due to lack of support from the Parish Council, PCSOs and members of the Group. I joined as a representative of the HVRA 12 years ago.

The good news is that **Community Speed Watch** (CSW) will continue throughout the Parish when weekly sessions will be carried out at various locations at random times of the day. If you are concerned about the speed of traffic on our local roads and have an hour to spare, I am always looking for volunteers to join the team, so do please get in touch.

PC Lee Turnham, who is the Coordinator of Community Speed Watch for the whole of the Thames Valley region as well as working with the Hampshire Constabulary in the joint operations unit, gave an interesting talk at the HVRA meeting on 7th December

This is a WARNING TO ALL DRIVERS: Since January, anyone caught by the

Police Camera Van doing 50% over the speed limit, e.g., 45+mph in a 30 limit will go straight to Court and not be offered a Speed Awareness Course.

Please keep to the speed limits.

Rosemary Hewitt  
CSW Coordinator  
01494 562752

Police & crime commissioner for Thames Valley: <https://www.thamesvalley-pcc.gov.uk/get-involved/speedwatch/>

CSW Launched across Thames Valley: <https://www.thamesvalley-pcc.gov.uk/news-and-events/thamesvalley-pcc-news/2021/10/launch-of-community-speedwatch-scheme-across-thames-valley/>

Community Speedwatch UK  
<https://communityspeedwatch.org/FRONT-v2-Home.php>

## Village Shop News

Life at the shop has been busy again over the Winter. In December the Carols and Lights event went well; the children of Hughenden Primary School and our very own Shop Choir were amazing, all facilitated by Chris and Liam of local radio station, Wycombe Sound.

We were able to hold our Staff Christmas Party at The Gate in Bryants Bottom and with Carols from the Shop Choir and some great food laid on.

It was lovely to be able to have our Christmas Party again (all legal) – and the first since 2019!

Christmas gift sales rocketed and most seasonal Gift Sets were sold out by mid-December! Staff had a good break, the shop having been closed early on Christmas Eve on the Friday, through to the following Tuesday.

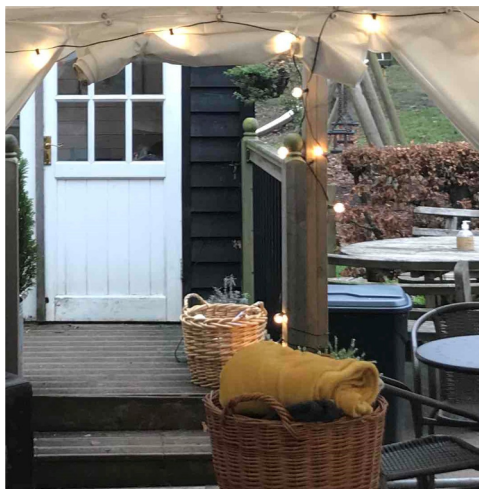
The cold weather does not seem to have deterred too many who have still been able to sit in our cosy outside space.

Our provision of blankets, lights and plentiful hot drinks have gone down well and a best-seller has been our Hot Chocolate with all the trimmings!

We have a new blender and sales of



healthy smoothies are back on the increase. As well as our range of local Timpson's cuts of chicken, lamb and beef, we now stock a range of Chiltern Venison which is selling well and we are now preparing for spring with seasonal Mother's Day and Easter cards and gifts. A new range of ready prepared potato and vegetable products will also be in store including mashed potato, sweet potato fries and cauliflower cheese.



### Community

The **Knit and Natter group** is meeting on Tuesdays from 2pm for knitting and a natter! (participants also work on other projects such as crochet, cross-stitch and quilting). If you would like to join the group or know anyone who would, please contact Vanda Bromwich on 01494 563390.

We continue our **shopping deliveries**

to any one who needs them and are donating any left over bread to the Saunderton Lodge Hostel on a regular basis.

**Vaccination Heroes** - During the Vaccinations at Hughenden Pharmacy we have been providing free hot drinks to all the parking attendants and vaccination staff. We have been extremely happy to offer this as they really have been local heroes.





# THE BIG JUBILEE LUNCH

2-5 June 2022

THE UK'S ANNUAL CELEBRATION FOR NEIGHBOURS AND COMMUNITY!

## The BIG JUBILEE LUNCH - Sunday 5th June

Supporting the Jubilee Weekend and the Eden Project's 'Big Jubilee Lunch', on Sunday 5th June we are planning a 'Big Cream Tea' event. The Big Lunch initiative encourages communities all over the country to "celebrate their connections and get to know each other in the spirit of fun and friendship".

We will be taking part with a traditional tea party style celebration selling cream teas (along with all our usual snacks, ice creams and drinks) and we will be open all day on the 5th to coincide with the Village Hall's Big Picnic on The Field.

To add a little luxury to your picnic, Cream Tea take-aways and picnic specials such as local handmade scotch eggs, quiche and sausage rolls will be available to order in advance for collection on the day.

Once again, we would like to say a massive 'thank you' to all our volunteers, both visible and behind the scenes, who help to ensure that your Village Shop runs smoothly. If you would like to volunteer please contact Louise on 07909 527990 for a chat. We look forward to warmer, longer days and more sunshine ahead.

Thank you, from everyone at Your Village store and Coffee Shop.

Louise Jones on behalf of the Shop Committee





## The Queen's Platinum Jubilee

This year The Queen will be celebrating her Platinum Jubilee as our Monarch. Various events are planned in Bucks and locally.

See the article on page 40 from the Shop for the Village picnic.

Residents of Bucks are encouraged to get involved. Check out the website for details – <https://www.buckinghamshire.gov.uk/community-and-safety/the-queens-platinum-jubilee/>. This web site also identifies funding sources for larger events.

The Queen's Green Canopy campaign was announced in October 2021 - <https://queensgreencanopy.org/>. Everyone across the UK is invited to plant trees in support of this, during the planting seasons, through to the end of the Jubilee year in 2022.

You can add your Jubilee tree to the Queen's Green Canopy map here: <https://queensgreencanopy.org/map-education-hub/qgc-map/#/>



### MASSAGE ?

In need of a massage?

**Remedial** – for bad backs, necks, shoulders, sciatica

**Sports / Deep Tissue**

Or just for pure **Relaxation**?

Call Pamela to book your appointment now

**07759 831706**

Treatment room in Naphill

FHT registered



## FRASER-MORGAN SCHOOL OF DANCING

\*\*\*\*\* Naphill Village Hall \*\*\*\*\*

### RAD BALLET for ages 3+



For more information  
please contact:

**01494 816539 or  
07974 121081**



# BEECHDEAN

## Farmhouse Dairy Ice Cream



Now available from  
**Hughenden Village Store and Coffee Shop**

**140ml Beechdean Farmhouse 'Spoon in Lid' Tubs**  
Chocolate Truffle, Eton Mess, Luxury Vanilla, Salted Caramel, White Chocolate  
Vegan Coco Caramel, Vegan Coco Vanilla

**Special Offers Available in-store!**

**2 Litre Beechdean Farmhouse Vanilla Tubs**

**Hughenden Village Store and Coffee Shop**  
Coombe Lane, Hughenden Valley, High Wycombe HP14 4NX

 @Hughendenvillagestoreandcoffeeshop



    
@BeechdeanGroup



**Opening Hours: Monday to Friday : 8am – 5:30pm, Saturday : 8am – 4:30pm, Sunday : 8:45am – 3pm**

## Rob Butler MP



As I write this at the end of February, my thoughts are with the people of Ukraine as they face an outrageous attack on their sovereignty. Putin's invasion appals every one of us, and I know that we all stand with Ukraine at this extremely difficult time.

Since my last contribution for Hughenden News, we've continued to make tremendous progress in curbing coronavirus. The success of the vaccination rollout has allowed us to move considerably closer towards normality. The Government's recent decision to lift all remaining legal restrictions is extremely welcome, and reflects the huge efforts of scientists, NHS staff and volunteers who have contributed to the vaccination programme. Our progress would not have been possible without the sacrifices made by local residents over an extremely difficult two years. We must now adapt to live with Covid, taking care of the most vulnerable, but also returning as far as possible to the freedoms we cherish.

The Hughenden Valley Village Hall has been at the heart of the local community for more than 70 years. It was terrible to hear that the roof

came off the village hall during Storm Eunice in late February. I was extremely relieved that no one was injured. I was pleased to see how quickly progress was being made to repair the roof when I visited the site just a few days after the storm, thanks to brilliant work from the local community.

I was also glad to learn that the St. Michael's and All Angels Church is among the recipients of the Government's Culture Recovery Fund. It was good to see the progress that's already been done on retiling the bell tower and replacing the finial when I visited the church.

In Westminster, I've continued to raise local people's concerns with individual ministers and on the floor of the House of Commons. As we progress on the roadmap back to normality, I will continue to support local people and businesses in our villages, hamlets and surrounding countryside, and make sure their concerns are heard in Parliament.

Rob Butler MP  
rob.butler.mp@parliament.uk

## HVRA Drainage Improvement Group (DIG)



### The Dew Pond

Along the footpath between Valley Road and Boss Lane, in the field on the right is a concrete lined pond shaded by a pretty Weeping Ash (albeit leafless at present). Locals will know this as the Dew Pond, put there for the watering of livestock.

The origins of dew ponds lie in pre-history, but are generally regarded as shallow depressions in grazing areas traditionally lined with puddling clay or chalk and allowed to fill themselves from moisture in the air. In practice it is generally considered that traditional dew ponds are just as likely to be filled by water runoff from

the fields and, of course, rainfall. Essentially, a dew pond is an artificial rather than a natural feature. Most have largely disappeared and been replaced by piped water supply.

The pond on Boss Lane Farm is a concrete construct, a relatively modern method introduced in the early 1900's, but clearly used on many farms and this one fits the standard profile. The pond is not filled these days and the original tree (see both pictures) is possibly suffering from old age and Ash die back.

In the early days it seems likely that



being adjacent to the Hughenden Winterbourne Stream, when the stream flowed it would feed the pond as it still does today. At some point a water supply was laid to enable water to be pumped from two wells on the farm to fill the pond.

As it happens, the pond is just on a hundred years old, built by a former owner of Boss Lane Farm somewhere between 1918 and 1922. Two photos accompany this article, one recently taken and the other, grainy picture is believed to be from the early 1930's.

So, is this a proper dew pond? Well, yes, it would certainly seem so

despite being made in concrete and later updated to a pumped water supply. And it may be that the pond we see was created where an earlier dew pond sat. To make a feature of the pond it would require restoration involving re-lining and a new water supply, possibly from a borehole, which would be an expensive process.

Long may it live as a rather nice village feature.

Thanks to Matt Hopkins for providing the photograph below and his help in putting this article together.





## DIG Activities

The winter has been relatively kind to us this year – it has been generally mild, not too wet and while the Hughenden Stream continues to flow merrily through the park, it is dry in its upper reaches.

The DIG will meet in March to discuss plans by the utility companies affecting the Valley and to plan our activities for the year. Typical works we are looking to get done this year include:

- Fixing of puddling at the foot of Trees Road by Transport for Bucks. (In the budget, we understand)
- Surveying and clearance of culverts & drains at the pumping station site by Affinity (promised last year...)
- Continued work by Thames Water on monitoring and further lining of the Hughenden Sewer to prevent surface water ingress. (Apparently 139 metres along Warrendene Rd were lined last year).

Paul Woodford

The logo for Hughenden Valley Village Hall features the text "Hughenden Valley" in a dark blue serif font above "Village Hall" in a green serif font. A stylized blue and green graphic resembling a roof or a bridge arches over the text.

## Hughenden Valley Village Hall

Hughenden Valley Village Hall, Coombe Lane, Hughenden Valley, High Wycombe, HP14 4NX

### WANTED: CARETAKER/HANDYPERSON

- To visit the hall regularly to ensure equipment is in good condition and available for hirers e.g. tables and chairs in the correct location.
- To provide basic maintenance, repair and technical support to the village hall committee by undertaking routine maintenance tasks.
- To react to equipment and services failures in the hall by arranging for repair by appropriate tradesperson.
- To research market and obtain quotations for committee approved capital expenditure items.

Please contact [chairman@hughendenvillagehall.com](mailto:chairman@hughendenvillagehall.com) or call Michael on 07483 226 321 for an informal chat.

# BETSY WILLIAMS SOLICITOR



## INSTRUCTION TAKEN IN YOUR OWN HOME



*Betsy is a qualified Solicitor who comes to you to help with:*

- **Wills • Probate • Inheritance Tax planning**
- **Lasting Powers of Attorney • Trusts**
- **General elderly client work**

*Betsy, you were a real star and made what, for me, would have been a difficult task a really pleasant one due to your kind understanding and patience and of course, your lovely sense of humour! Thanks again Betsy."*

Mrs T

*"May I say what a pleasure it was working with you. You are a considerate professional, not to mention a lot of fun! Thank you for your unending patience."*

Mrs K

**Call 01844 342083**

**for a free no obligation chat  
or email [betsy@betsywilliams.co.uk](mailto:betsy@betsywilliams.co.uk)**

**For more information and referrals - [www.betsywilliams.co.uk](http://www.betsywilliams.co.uk)**

## Planning Report

**Orchard Caravans, off Warrendene Road** – The Decision date for this CLEUD (Certification of Lawfulness for the Existing Use or Development) was 8th July 2021. On 24 February 2022, a Certificate of Lawfulness was granted for the Existing Use of the land for 3 caravans. A planning application would be required to increase that number.

**Glynswood Housing Development, off Green Hill** – The application to build 50 dwellings on a valley slope that had its Green Belt status removed by Wycombe District Council in 2019 was given the go ahead at the West Buckinghamshire Planning Meeting on 12th January because the developer, Inland Homes, had taken on board the criticisms regarding their earlier scheme by coming up with a designed approach in keeping with its sensitive location lying the Chilterns AONB and surrounded by National Trust parkland and Green Belt countryside

**Country Supplies application Ref: 22/05000/FUL** to create a new access road off Bryants Bottom Road, near the crossroads with parking for up to 12 HGVs and 14 customers' vehicles in a grazing meadow that lies outside the village settlement of Hughenden

Valley in the Green Belt and Chilterns AONB. A meeting was held in the Village Hall on Sunday, 23rd January for residents to discuss the matter and plan ahead.

A flyer was prepared, printed and distributed by a magnificent team of volunteers to hundreds of homes in the village and surrounding area. A short video had also been created and posted on the Hughenden What's On Facebook page. The deadline for comments/ objections was 25th February.

On Friday morning, 11th February I was invited to talk to Year 6 at Hughenden Primary School because they were aware of this application and wanted to know something about Planning. I explained in simple terms how, for lots of things in life, we have to follow rules, codes and policies so that there is order and not chaos, and that planning is no different.

I displayed a large map showing the whole of this region coloured green denoting that the settlement of Hughenden Valley, the farmland and countryside surrounding us lies in the Green Belt, and that the black lines running in parallel to each other show that the whole region lies in the

Chilterns AONB. The children could also see that their school is located within the settlement of HV, i.e. inside in the black boundary that completely encloses the whole village, but that the untouched grazing meadow that is the subject of this application does not and where restrictive Policies apply.

The children were very engaged, asked questions and one young boy read out what he had written about all the big lorries that go up and down the road and the horrible fumes.

I thanked the children for taking an interest in this issue as well as the lovely area that we live in as it is very important.

Rosemary Hewitt  
HVRA Planning Sub-Committee  
01494 562752

## Hughenden Good Companions

Hughenden Good Companions is a very long established Club for the over 65's and has not been able to function properly for two years. However, we are hoping to resume our usual monthly programme of speakers/musical entertainment etc later this year.

With this in mind, there will be an Open meeting at 2p.m. on Thursday 7th April 2022 when we hope to welcome new fellow 'Senior Citizens' - male and female with a view to forming once again a happy and thriving Association. Refreshments will be provided.

Our meetings are held in the Hughenden large Village Hall, at 2p.m. on the first Thursday of the month.

Pat Furness,  
Hon Secretary 01494 565501



# St. Michael & All Angels

CHURCH IN THE PARK | LIVING, LOVING, SERVING

## News from St Michael's

Slowly, slowly, things are getting back to 'normal' aren't they? Although the scaffolding is still up on the Church tower, the main structural work is complete, and only the finer details of the masonry remain to be completed. The work has been undertaken with the minimum of disruption to Church life, after sterling fundraising efforts from Church officers and congregation. But the 'normality' to which I refer, is in the format of services, and in particular the provision of REFRESHMENTS after services which were reinstated for the first time on 13th February, with much rejoicing. The ability to meet in fellowship in this way has been an important part of the Church's ministry, and much missed especially when socialising has been constrained for so long.

The beginning of February also saw the restarting of the Baby and Toddler Group in North Room. Although some old hands were missing after positive Covid tests, it was clear that not only

the visiting mums, grans and children, but also the 'helpers' had missed the weekly meetings.

Friendship Group will be restarting soon, and the Mother's Union has restarted.

Easter will soon be upon us – shortly you will be receiving details of our Easter services through your letter boxes. What better time to celebrate together?

So, normality practically here! We hope and pray that our community as a whole can feel similarly restored.

For all details of events mentioned here, and for other details of what is going on in St Michael's, including service times, please consult our website.  
[www.hughendenparishchurch.org.uk](http://www.hughendenparishchurch.org.uk).  
or telephone the office (Monday, Wednesday Friday, 9.30-12.30: 07928 536543)

Jane Tyrer





Learn, Laugh, Live

## High Wycombe and District u3a

We held our annual Christmas coffee morning in December as usual at Naphill Village Hall, when somewhat impromptu entertainment, mince pies and carol singing were enjoyed by all. Thank goodness things seemed almost back to normal after such a long time on Zoom.

Our monthly General Meeting programme held at Lacey Green Village Hall continues into the summer with speakers on *P G Wodehouse*, *The Accidental Art of Prime Numbers*, and the *Air Ambulance*.

Most of our member-lead interest groups are meeting again face to face. They range from Discovering Art and Discovering Science, to Whist, Ten Pin Bowling, and Pub Lunches – we hope something for everyone. Also coming up is our holiday, a Blue Badge guided coach tour to the Wye Valley and South Wales in early May staying at a four star hotel. The 5 day programme of visits includes calling

in at the American Museum near Bath on the way and the SS Great Britain on the way back, with Cardiff Bay and the Royal Mint part of the Welsh highlights in between. This follows our previous successful tour to Northumbria which took place between lockdowns in 2020.

This year we will celebrate the 40th anniversary of the founding of the u3a and we are hoping to increase the High Wycombe membership and set up more interest groups. Look out for us advertising around the area. If you are retired from full-time working and seeking to widen your interests and social life, and you think u3a might be for you, do come along to any of our meetings where you will be most welcome. For more on what we offer take a look at our website [www.u3asites.org.uk/highwycombe](http://www.u3asites.org.uk/highwycombe) and contact us if you would like to know more.

Judith Elliott (Secretary)  
hwu3asecretary@gmail.com

## Storm Eunice

Unfortunately, just before going to print, storm Eunice hit the country on the 18th of February, reaching peak speeds in the Hughenden area in the late morning. The roof of the main hall of the Village Hall was blown off

in one go and landed in the car park between the Hall & the shop, striking the corner of the shop building and crashing into the frame of the marquee over the external seating area. The roof of the marquee had





already been removed, otherwise that would have been half way up Boss Lane.

The wind also blew down a conifer next to the tree used for the Christmas lights.

Luckily the metal frame of the marquee took the force of the impact and stopped the roof travelling further into the shop front. Three staff and two customers were in the

All working together - The village shop donated two large domes of cakes slices to the clear up team, along with supplies of tea, coffee, sugar and milk.



building at the time but all were unhurt. Our thanks to a team of workers from Harvey's Electrical who helped to check that no one was trapped beneath the debris and who helped remove the corner of the debris so that the shop staff and customers could evacuate.

The weather forecast was for more rain over the weekend and the remaining roof was not watertight. If significant amounts of water got on the wooden floor then we'd have to repair the floor as well as the roof.

Plastic sheeting was procured and laid, and following an urgent appeal, over a hundred buckets to catch the drips were provided by residents & businesses.

A temporary roof is now in place so that the hall is basically waterproof while plans for the replacement are put in to action.

At the time of going to print sadly the shop remains closed due to ongoing safety issues in the village hall area, and the site is closed to the public.



**Chiltern Venison**  
Local. Wild. Healthy. Sustainable. Organic.



Available at Hughenden Village Store,  
Peterley Manor Farm  
+ local delivery.  
Fresh, frozen & special cuts to order.

[www.ChilternVenison.co.uk](http://www.ChilternVenison.co.uk)  
Geoff: 07813 81 80 72  
Hughenden Valley

   
Chiltern Venison



FOOD HYGIENE RATING  
5  
VERY GOOD



# Valley Players Murder Mystery Evening

Due to Storm Eunice, the original date for the Murder Mystery Evening 'Dig for Vengeance' has been changed to 26<sup>th</sup> March. Please phone 07942 357499 for tickets.



## "DIG FOR VENGEANCE"

A Lazy Bees Script

*noda*  
Be inspired by amateur theatre



A Dinner Theatre Murder Mystery  
by Patricia Gay. Solve the crime & win a prize!  
Who killed Mrs Jardine in her potting shed?

At Hughenden Valley Village Hall on  
Saturday March ~~12<sup>th</sup>~~ <sup>26<sup>th</sup>!</sup> at 8pm.

Tickets £15 each to include two course  
fish (or veggie) supper and coffee.

For more details or tickets contact us on: 07942 357499  
or at: [contact@valleyplayershughenden.co.uk](mailto:contact@valleyplayershughenden.co.uk)  
Information also available on our website:  
[www.valleyplayershughenden.co.uk](http://www.valleyplayershughenden.co.uk)



# Heather Couper CBE

1948 - 2020

Heather Couper lived at Loosley Row and she was the first woman to be elected as the President of the British Astronomical Association. We were lucky enough to have her as the Guest Speaker at our HVRA 2008 Annual General Meeting. When she was young she did a stint working in fashion retail, but she changed her career direction completely and it was her fascination with galaxies that rekindled her desire to study astrophysics. There was one man, however, who appeared frequently in the photos, and that was Nigel Henbest (in the picture), with whom she ran a production company, as well as co-writing numerous books and articles. She went on to become Professor of Astronomy at Gresham College, London University and was a Past President of the British Astronomical Association. The icing on her cake was being awarded a CBE.

Heather was an international broadcaster and writer on astronomy, space and science and was the Astronomy Columnist for The Independent. She wrote and presented the 30 part series for BBC Radio 4 on the History of Astronomy – Cosmic Quest – which was broadcast each weekday for 6 weeks during May and July 2008.



Before concluding her talk at our AGM she gave everyone a Star Chart for the month of July, which surely stimulated many of those present to see “what’s up there” or encouraged them to look into the sky more often.

This carved wooden memorial to Heather Couper has been installed next to her grave, which is situated beneath an oak tree at the top of the orchard in Green Acres Chiltern Woodland Burial Park at Jordans. Her memorial is inscribed with her name and dates, at a place she loved. The memorial has emblems of things she loved, a carved row of wild flowers and astronomy, shown by two carved

stars representing the beautiful double star Albireo. One is a bright blue star and the other a golden one making the beak of the Constellation Cygnus (the Swan) - very appropriate for Buckinghamshire. As you can see there is also a lovely wooden model of the planet Saturn on the top.

She died quietly in the February 2020

Covid lockdown, when there was no chance to recognise her achievements, so it is nice to remember her like this now.

Angus Idle BAA

Image credits: Portrait : Angus Idle, The Memorial: British Astronomical Association, by permission.



## Covid-19 Vaccination Programme

Some recollections from my time as a volunteer at the Covid Vaccination Clinic last year.

The overriding memory – Busy, Busy, Busy.

I volunteered to assist as a volunteer last autumn - just as it was getting colder!

Most days I was asked to cover parking (perhaps it was the job for 'blokes' or perhaps it was simply because I was well wrapped up!) – standing outside for four and a half hours attempting to direct traffic either in to the car park and a specific space or away to park elsewhere when no spaces were available. (not easy when there is a mother and baby clinic, a flu vaccination session and the Covid vaccinations all going on at the same time)

Some days I was given an admin role – registering attendees etc., the process differed for those who walked in without appointments and those who had an 'appointment' (or should I term it – their 'dose' was reserved for them that day).

It was disappointing how many people thought that as they had

booked a 'time slot' then at exactly that time the queue in front of them would 'part' and they would walk to the front of the queue. Again it was surprising how many people turned up without booking and expected to have a 'guaranteed' vaccination there and then, almost as if the vaccine grew on the bushes around the building. If all the 'spare' vaccines had gone, then without Harry Potter we couldn't make more appear. We had to wait for the next delivery.

It was nice to be thanked by people for giving our time and energy, especially the man who came back later the day of his booster with 2 tins of sweets for the volunteers.

Whilst the majority of the volunteers were like myself - retired, it was good to see teenagers and other generations also volunteering.

The HV Pharmacy and the Surgery did a great job setting up the clinic – made me think that Hughenden Valley was pulling its weight, helping get us all through the pandemic.

Special thanks to Elizabeth Carless for organising the volunteers so we had the numbers to cover each shift.

Finally I think a special mention

should go to Boris Johnson, his announcement in December to expand the vaccination programme, saying that resources will be 'mobilised' to cover the increased demand – did achieve one very noticeable thing - to move the queue, which at peak times started at the front of the building out onto the Valley Road footpath – occasionally getting as far as BuildBase. Oddly I didn't see those additional resources appear quite as quickly as the queue did – Harry Potter you're never around when we need you.

Dave Collins

### Vaccinations at Hughenden Pharmacy

I was really pleased to hear some time ago that Hughenden Pharmacy would join the growing list of local pharmacies in Bucks which are supporting the vaccination effort. Bucks has benefited from a higher % than any of its neighbours in involving local pharmacies in this programme and they have contributed so much. Not only have they known many of the patients that they serve but they have also worked closely with the surgery to ensure that all local patients have an opportunity to be vaccinated on their doorstep.

Since May 2021 the site has provided

over 54k vaccinations with the peak being reached just before Christmas - 5,291 vaccination doses provided in one week. Feedback from patients has been very positive and whilst parking has been a challenge – there has always been a friendly welcome from volunteers and staff alike.

With younger people forming the priority cohort to be vaccinated the pharmacy will still provide at least one clinic a week and is looking to continue to play a vital part in this programme in the months ahead.

Well done to Dr Simon Wilson and team as well as Elizabeth Carless and her amazing team of volunteers – it's been a fantastic effort.

Simon  
Councillor Simon Kearey  
Hughenden Parish Council

And finally, Bucks Volunteer Matching Service is always on the lookout for more volunteers for a wide variety of roles, see <https://communityimpactbucks.org.uk/buckinghamshire-volunteer-matching-service/> .

To volunteer at the Pharmacy please contact [elizabethcarless@sky.com](mailto:elizabethcarless@sky.com) . The CCG webpage for local information on clinics etc. [tinyurl.com/54nny8ad](https://tinyurl.com/54nny8ad)

## Recent News from Buckinghamshire Council



As usual, here is a sprinkling of press releases from Bucks Council. All these and more can be found at <https://www.buckinghamshire.gov.uk/news/>

**Be a Better Biker.** Now in its 13th year, 'Be a Better Biker' is back for 2022!

Developed by Transport for Buckinghamshire's (TfB) road safety team, the workshops were put on hold throughout the pandemic, but can now safely resume. Suitable for anyone with a full motorbike licence, the workshops can help bikers take their skills to the next level, whether you want to improve your riding skills, are returning to motorcycling or just want to get up to date with the latest training. The workshops will be running from March through to July.

### **Boundary Commission for England launches public consultation on proposed constituencies**

The Boundary Commission for England (BCE) invites comments during its secondary public consultation on constituency boundaries, which is open now until 4 April 2022. (Note: This public consultation relates to MPs constituencies and is separate from the councillors ward consultation.)

### **Views invited on new traffic offences enforcement powers**

Keeping roads safe and clear is at the heart of Buckinghamshire Council's plan to become one of the first local authorities outside of London to take on the enforcement of moving traffic offences. Now the council is inviting people to find out more about the plan and give their feedback by 4 April.

An upcoming change in legislation by the Department for Transport (DfT) means that powers used previously only by the police will soon be available to a limited number of councils – and Buckinghamshire wants to be one of the first to take advantage of the opportunity.

### **Getting gritty with it!**

Bucks residents took part in a public vote throughout December to name four Transport for Buckinghamshire (TfB) gritters. Sixteen pre-selected names were whittled down through a Twitter poll.

The four names chosen by the public are: "Spready Mercury", "David Plowie", "Grit Happens", and finally "Chris Gritty".



# Hughenden Valley Village Hall

Hughenden Valley Village Hall, Coombe Lane, Hughenden Valley, High Wycombe, HP14 4NX  
[www.hughendenvillagehall.co.uk](http://www.hughendenvillagehall.co.uk)

## The Perfect Venue Choice for your event whatever the occasion.

Set in AONB Hughenden Valley Village Hall has two halls both with fully equipped kitchens. The large hall can accommodate 100 sitting and has an elevated stage and the small hall, with a capacity of 40, benefits from an outside patio area.



There is plenty of off-road parking and the extensive grounds incorporate a playing field, a conservation area, children's playground AND the adjacent village shop and cafe overlooking the play area.

So if you have a party, meeting, class, club, wedding, special celebration, or show, book on-line at

**[www.hughendenvillagehall.co.uk](http://www.hughendenvillagehall.co.uk)**

or email

**[bookings@hugendenvillagehall.co.uk](mailto:bookings@hugendenvillagehall.co.uk)**



## Meet the Neighbours

In this edition of the Hughenden News we would like to introduce you to another local business - "Applewoods Surveying Ltd". Jason Wood is the director of the Company and we will let him introduce himself and in his own words give you a snapshot of the working life of a Chartered Surveyor.

I am Jason Wood, a Chartered Building Surveyor based in Hughenden Valley.

**Applewoods Surveying Ltd** was established back in 2009 and offers residential surveying and architectural services including:

- Building Surveys – assessing the condition of a property for prospective purchasers
- Architectural Design Services – generating design solutions for house extensions/alterations, including preparing and submitting drawings to the various local authorities
- Party Wall Surveying – preventing and resolving disputes in relation to party/boundary walls and excavations near neighbouring buildings

The 'Chartered' aspect of my job title is an additional professional qualification and also means that my work is regulated by the Royal Institution of Chartered Surveyors.

How did I get here? After studying maths, geography and CDT (Craft, Design and Technology) at A levels at



Jason Wood

John Hampden, I completed an Honours degree in Building Surveying at Reading University. Then, 15 years of surveying positions at a London Housing Authority, Building Control at Wycombe District Council and a private surveying practice in Berkhamsted.

My range of services means that I can flex to meet changes in the market such as an increased need for surveys driven by the recent stamp duty holiday. I also work with a trusted network of colleagues in related specialisms such as Structural Engineers, Quantity Surveyors and

Building Control Surveyors, which adds value to the services that I offer.

I have lived in Hughenden Valley for 15 years and in the Wycombe area for most of my life. As well as benefitting my life personally, this has also supported my business. It afforded me plenty of local contacts within the construction industry and potential customers right from the start. It also brings the advantage of repeat business and word-of-mouth recommendations, which are my primary source of new projects. In addition, since I know the area intimately, and have many years of experience with Wycombe Council, either directly or professionally, I am familiar with the planning and

building control issues relevant to the houses in this area.

I have never regretted starting my own company. I made the jump when my children were young and this meant that I could be around while they were growing up. I love meeting new people, helping them to achieve their dreams for their property and making their home 'work' better for their needs. When out and about locally it is particularly fulfilling when I bump into happy clients who tell me how pleased they are with their projects.

Jason Wood

[www.applewoods-surveying.co.uk](http://www.applewoods-surveying.co.uk)



## Who were they? Observations on Genealogy

You may wonder sometimes how Christmas and birthday card senders are actually related to you. Is Aunt Julia on your mother's or your father's side of your family, and is she a real aunt or an honorific given to a well-loved neighbour or just a friend of the family from some earlier occasion in different circumstances?

It is not until a large family gathering occurs that questions arise or when a will is read. Who are or were they?

Godparents are not necessarily related to you but are well known to you or even more likely known to your own parents. There are several ways of finding out if you are curious about family history, fortunes or 'old wives' tales.

First, look online for help.

If that does not lead you to their relationship, politely ask elderly folk like grandparents or great aunts or uncles for information; keep notes, record voices telling you about their own great-greats.

Now you can double check on the newly released 1921 Census and the 1939 pre-war Register. Use suggestions given online by

Ancestry.com or 'Who do you think you are?'. Television programmes, monthly magazines or County and Parish Records will all give you clues. There are First World War Casualty Lists. Lots of detail of where it happened and Ambulance journeys back.

But if you really have a strong interest, ask for copies of old photographs (often with scribbled notes on their reverse) which can give you links to follow through, not just your own photographs, but ones of more distant relatives who have married into other surnames.

Remember about the Morgans, Jones's and Reeces, or the MacDonald's. Then look to clan names like Johnstones and Lairds. They may not be such close relatives, but they may contain the bits of information which can lead you to a discovery. Scottish Records will be coming out soon.

Think, who was Granpa O'Reilly?. Unfortunately some Irish Records were destroyed in a fire in 1942.

In the last twenty five years so much information has become available for everyone; on their phone or



computer. Things such as Trade Directories, School lists, even autograph albums full of names and post cards are useful in your research.

The earlier National Census Records, from 1841 onwards, in decades to 1921 are a mine of information on occupations, households, servants, shop keepers, journeymen, apprentices, scholars and what they eventually became.

The 1939 Register of Information, created as the threat of war increased, shows family gaps for those who were by then 'Called Up' for National Service or had already been evacuated. The National Archives are at Kew.

Get those photographs together and share them. You will be able to see how fashions change, studio photos change in style and early cars!

Janet Idle



**Harveys**  
mechanical

**Harveys**  
electrical

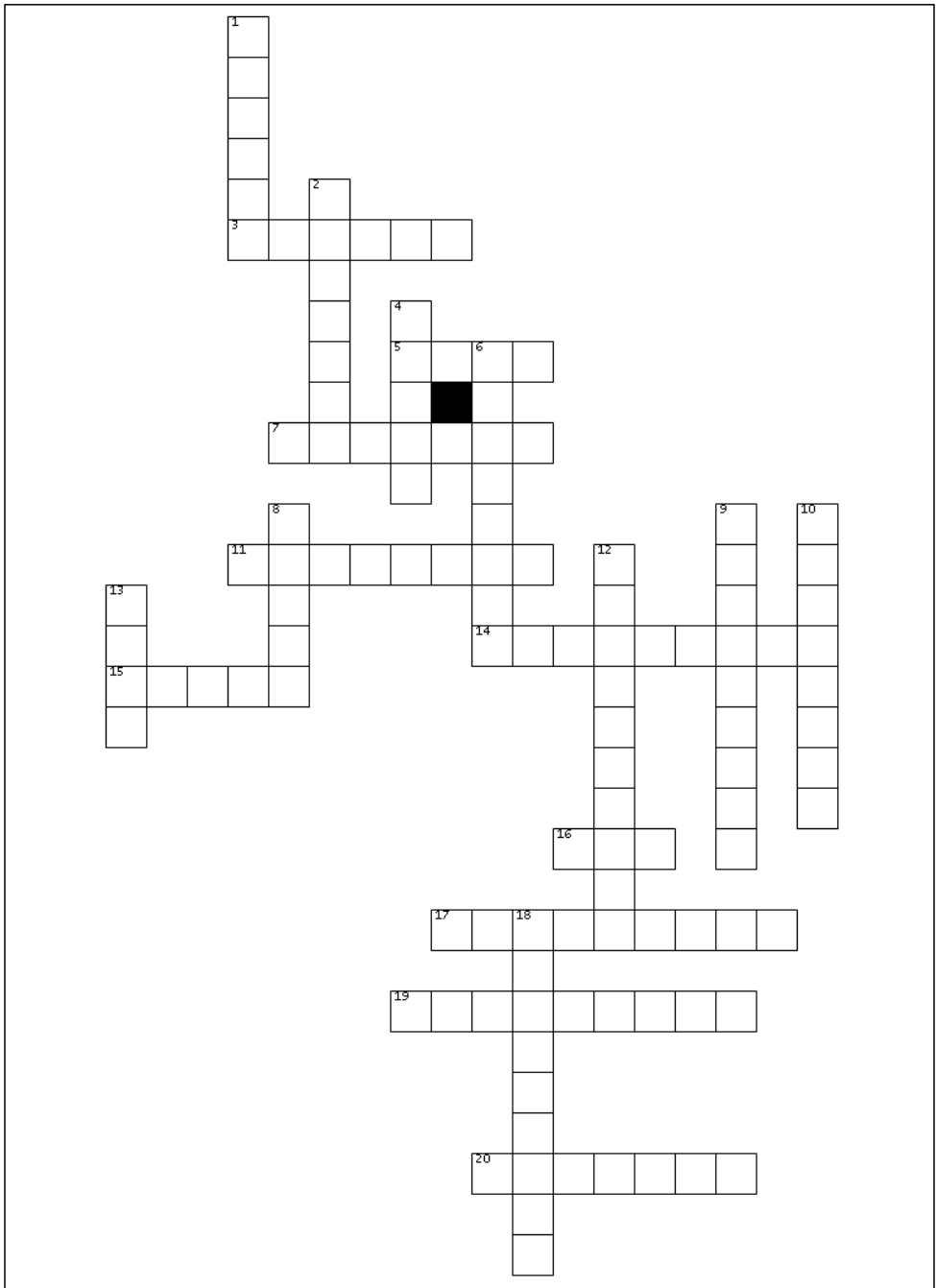
We have full-time positions available for fully qualified Electricians and Plumbers – in Commercial, Industrial & Domestic Contracts.

If interested or have any questions, please send CV to [info@iharveyandson.com](mailto:info@iharveyandson.com) or call 01494 868456

L Harvey and Son Ltd – Unit 4 Le Flaive Business Centre, Church Lane, Naphill, Buckinghamshire, HP14 4US



# Hughenden Adult Crossword Challenge



**Across:**

3. An implement for breaking up and smoothing out the surface of the soil
5. The Lady Gardener is the most fragrant of them all
7. To develop or flourish
11. Usually considered the last month of winter
14. Spring
15. Swiss chocolatier and confectioner
16. The Spanish word for light
17. Of a man called Huhha
19. The Roman ritual of Lupercalia
20. Bright green

**Down:**

1. An area that has its own local church and priest or minister
2. Recurring pattern at progressively smaller scales

4. A solid geometric shape whose two ends are similar and whose sides are parallelograms
6. Galanthus - the true harbinger of Spring
8. Don't break it, give a piece of it but listen to it
9. A group of people living in the same place
10. The point where the sun's path in the sky is the farthest north or south from the equator
12. To give something in order to achieve
13. The resting stage of a plant
18. Protected to prevent urban sprawl.

Answers will be made available on the HVRA web page: <https://hughendenresidents.org/>

# HIGH WYCOMBE FLOWER ARRANGEMENT SOCIETY

We meet at 7.30pm on the third Wednesday of each month (except August and December) at Hughenden Valley Village Hall HP14 4NX

Come and join our existing members, to enjoy evenings of super demonstrations, by area demonstrators

In addition to 7 demonstrations throughout the year, our annual calendar also includes:

- \*AGM buffet and quiz (Jan)
- \*Spring Coffee morning
- \*Summer Tea (August)
- Practical Evening (Hands on) x 2
- Christmas Lunch at restaurant (charges apply)
- Theme evenings (inc buffet)
- Occasional Sales Table



Raffle: For demonstrator's arrangements

\*These events are optional and incur a small charge

Subs: £42.20 annually

Visitors £7.00 per evening

## Why join!

Learn how to create your own displays from flowers and foliage from the garden or supermarket

Hints on what flowers to choose and how to make them last

Be inspired by leading demonstrators

**Come and give it a try – if you bring this advertisement with you, you and a friend can visit free for one meeting only.**

**Please ring Jan Collins for more info 01494 563890**

## For your Diary

Jubilee Picnic	Sunday 5 <sup>th</sup> June, see the article in this issue from the Community Shop

### Regular events

1 <sup>st</sup> Tuesday each month, 7.30p.m. (not Jan or Aug)	HVRA committee meetings, Small hall
For 2022: last Friday each month, but not Aug or Dec.	<u>HAGA</u>

All dates and venues are subject to change as work on repairing the Village Hall roof progresses.

## Hughenden News - Publications Dates

### Schedule for Summer Edition 2022

- Wed 14<sup>th</sup> June      Principal deadline for Copy and Adverts
- Thu/Fri 14<sup>th</sup>/15<sup>th</sup> July      Delivery of Magazines to Residents before Summer holidays

### Schedule for Winter Edition 2022

- Fri 14<sup>th</sup> Oct      Principal deadline for Copy and Adverts
- Sat/Sun 19<sup>th</sup>/20<sup>th</sup> Nov      Delivery of Magazines to Residents before Christmas Fair

### Schedule for Spring Edition 2023

- Fri 11<sup>th</sup> Feb      Principal deadline for Copy and Adverts
- Sat/Sun 18<sup>th</sup>/19<sup>th</sup> Mar      Delivery of Magazines to Residents

# Instructions for Authors

**Please follow these guidelines**

## **DEADLINES**

The schedule for the next edition is on the next page. It is not possible to guarantee that items received after the deadline will be included in an edition, unless a prior arrangement has been made with the team.

Remember that any late copy does delay the production of the magazine immensely, and may not be accepted at all.

Articles can be a report of events, but may also cover planned events, your views, your hobbies, etc.

## **SENDING COPY**

Please send copy in good time, in Word format as attachments to [magazine@hughendenresidents.org](mailto:magazine@hughendenresidents.org) . We can also handle .RTF or .ODT formats.

If you do not use a computer, don't worry, please phone the Secretary or other Officer to make arrangements.

## **Images, photographs and artwork**

Pictures and other images should be sent, either as .pdf files, without any hypertext, or as uncompressed .jpg files, attached to an email. Please always title them. **They should not be embedded within the copy itself, but**

please provide some indication as to where they should be placed within the text. High-resolution images are preferred.

Remember to send artwork images for advertisements to [treasurer@hughendenresidents.org](mailto:treasurer@hughendenresidents.org) .

## **COPYRIGHT**

The sender must ensure that full permission to publish images comes with each item. Do not offer copyrighted images for publication without permission from the owner. HVRA will hold you responsible for this.

## **REPRODUCTION OF IMAGES**

The photographs published in this magazine must not be reproduced elsewhere, except with the express permission of the photographer via the Editorial Team.

There is, however, always a need for good/relevant pictures to illustrate the magazine or the website, so if you would like some of your photographs to be considered please get in touch (see email below).

Email address for submissions: [magazine@hughendenresidents.org](mailto:magazine@hughendenresidents.org)



## Regular Village Hall Users & Contacts: Spring 2022

<b><u>Monday</u></b>			
Pre-School	9:00am - 1:00pm	L	Jenny Ing 07990968242
Pre-School	11.30am - 3:15pm	S	Jenny Ing 07990968242
Hughenden Beavers	5:00pm - 7:00pm	L	Lynda Wallwork 564582
Spectrum Pilates	1:30pm – 2.30pm	L	Emily Harwood 07803123092
Spectrum Pilates	9:15am – 10.15am	S	Emily Harwood 07803123092
Hughenden Art Group	7:00pm -10:00pm	S	Paul Cooper 07718141025
Valley Players	7:30pm - 10:00pm	L	Dave Collins 07876575706
Village Hall Comm	1 <sup>st</sup> Mon - 8pm - 10pm	C	Michael Sole 563516
<b><u>Tuesday</u></b>			
Pre-School	9:00am - 1:00pm	L	Jenny Ing 07990968242
Badminton	1:30pm - 3:30pm	L	Nancy Hussey 563767
Sainsbury Veterans	3 <sup>rd</sup> Tues, 2pm - 5pm	S	Sandra Jones 715219
U3A	4 <sup>th</sup> Tues- 2pm-4pm	S	Julia Shorthall 07470046999
Residents Assn	1 <sup>st</sup> Tues 7:30pm - 10pm	S	Peter Cannon 563228
Spectrum Pilates	6:45pm-9:00pm (not 1 <sup>st</sup> )	S	Emily Harwood 07803123092
Shop Choir	2 <sup>nd</sup> Tues 7.45pm-9.45pm	S	Louise Hooper 07917341397
<b><u>Wednesday</u></b>			
Pre-School	9:00am - 1:00pm	L	Jenny Ing 07990968242
Pre-School	12noon - 3:15pm	S	Jenny Ing
Badminton	1:15pm - 3:15pm	L	Elaine Veysey
Flower Arranging	3 <sup>rd</sup> Wed 6:30 - 10:30pm	L	Jan Collins 563890
Evolution Pilates	5:45pm - 9:00pm	S	Karen Letham 07973384817
Wyc Photo Soc.	1 <sup>st</sup> 7.45pm – 10.15pm	L	Steve Smith 07973252717
Wyc Photo Soc.	3 <sup>rd</sup> 7.45pm – 10.15pm	S	Steve Smith 07973252717

<b>Thursday</b>			
Pre-School	9:00am - 1:00pm	L	Jenny Ing 07990968242
Water Colour Art	10:00am – 12:00noon	S	Jennifer Chalmers 531119
Painting Class	12noon – 2:00pm	S	Bucks Adult Learn 473795
Good Companions	1 <sup>st</sup> Thurs 2pm - 5pm	L	Pat Furness 505501
Tai-chi	2:15pm - 4:15pm	L+S	Pam Felix 440198
Slimming World	4:30pm - 8:00pm	S	Kerry Brown 07887567264
Zumba	7.30pm- 9.00pm	L	Iwona Zielinska 07523452872
<b>Friday</b>			
Pre-School	9:00am - 1:00pm	L	Jenny Ing 07990968242
Spectrum Pilates	9.15am-10.25am	S	Emily Harwood 07803123092
Pre-School	11.00am - 3:00pm	S	Jenny Ing 07990968242
HAGA Gardening	4 <sup>th</sup> Fri 7:00-10:30pm	L	Debi Hoare 816304
<b>Saturday</b>			
PiYo Bucks	8.15am – 8.45am	L	Alison 07801268303
Jazzercise	8:45am - 10:15am	L	Marthese 01753889746
Reboundfit	8.30am – 10.30am	S	Rosi Browne 07914530575
Pregnancy Yoga	10.30am-12.30pm	L	Charyn Williams 07738626569
Multiple Sclerosis	1 <sup>st</sup> Sat 1:00pm-4:30pm	L	

## HVRA Officers and Road Reps Spring 2022

<b>Office</b>	<b>Officers</b>	<b>Phone</b>
Chairman	Peter Cannon	563228
Vice-Chairman	Andrew Capey	258724
Treasurer	Paul Woodford	562913
Secretary	Rosemary Hewitt	562752
<b>Road Rep for</b>	<b>Road Rep</b>	
Boss Lane	Lyn Hawkins	562850
Bryants Bottom (south)	Jill Armshaw	488807
Bryants Bottom (north)	Janet Howe	488569
Burnham Road	Andrew Capey	258724
Cherry Tree Close	Catherine Hinds	297474
Church Farm	Angus & Janet Idle	563673
Coombe Gardens	Jerry Morley	
Coombe Lane	Angus & Janet Idle	563673
Cryers Hill (North)	Vacancy	
Cryers Hill (South Upper)	Vacancy	
Cryers Hill (South Lower)	Vacancy	
Fleet Close	Jane Boughton	562991
Friars Gardens (west/south)	Julia Grant	565746
Friars Gardens (north/east)	Sam Booth	07958 319225
Frogmore Close	Rebecca Rycroft	07803 830689
Hampden Road		
Orchard Close	Peter Cannon	563228
South Maundin	Brenda Morris	564893
Trees Avenue	David Mynors	562004
Trees Road	Vacancy	
Valley Road (south)	Paul Jenner	565543
Valley Road (mid)	Rosemary Hewitt	562752
Valley Road (north)	Nancy Pomfret	562117
Warrendene Road		
Wedgewood Drive	Jerry Morley	
Whitfield Road	Angus & Janet Idle	563673
Editorial Team	See Editorial	
Bucks Free Press contact	Janet Idle	563673
Webmaster	Andrew Capey	258724
Village Hall	Michael Sole	563516
Village Shop	Louise Jones	568653

## Index of Advertisers

Applewoods Surveying	34
Beechdean Farmhouse Dairy Ice Cream	42
Betsy Williams Solicitor	47
Buildbase	2
Chiltern Venison	54
Cryers Hill Post Office	11
Fraser-Morgan School of Dancing	41
Harvey and Son Ltd - vacancies	65
High Wycombe Flower Arrangement Society	68
Hughenden Autos	76
Hughenden Singers	16
Hughenden Valley Football Club	8
Hughenden Valley Pre-school	9
Hughenden Valley Village Hall	61
Hughenden Valley Village Hall - job vacancy	46
John Bishop Garden Machinery	27
Leigh Lewis Optometrist	75
Midway Chimney Liners and Sweeps	29
Pilates and Yoga	41
Premium Plumbing and Heating	20
SLC Plumbing and Heating	20
Spicer Plastering Services	29
Stuart Gibbons Painting Decorating and Carpentry	20
The Harrow	3
tk plumbing and electrics	23
Turville Printing Services LLP	36
Village Environmental Services	17

**LEIGH LEWIS**  
OPTOMETRIST

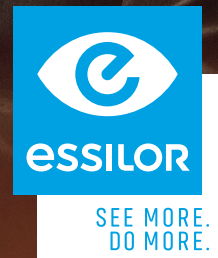
247 Main Rd, Walters Ash, High Wycombe HP14 4TH  
To make an appointment call 01494 564 600  
[www.my2eyes.co.uk](http://www.my2eyes.co.uk)

#1

IN SPECTACLE LENSES  
WORLDWIDE\*

**BUY ONE  
GET ONE  
HALF PRICE**

T&C'S APPLY



\*Euromonitor, Eyewear 2020 edition, Essilor International SA company, Retail value sales at RSP.





- Service
- Repair
- M.O.T

Your **Local, Friendly, Family** run garage  
(01494) **563344**



### **M.O.T Testing and Repairs**



---

Servicing (all makes/models)

---

**Exhausts, Brakes, Clutches**

---

Advanced Diagnostics

---

**Free Courtesy Cars & Free Collection/Delivery**

**Female Friendly Garage, Magazines, Tea & Coffee**

**Location:**

Valley Road, Hughenden Valley, High Wycombe, Bucks, HP14 4LG

[www.hughendenautos.co.uk](http://www.hughendenautos.co.uk)